



Generalitat de Catalunya  
**Departament d'Acció Climàtica,  
Alimentació i Agenda Rural**

# **SECTOR CEREALS**

**Recull estadístic  
15 de febrer de 2023**

**SECRETARIA GENERAL  
Gabinet Tècnic  
Servei d'Estadística i Preus Agroalimentaris**

# SECTOR CEREALS

---

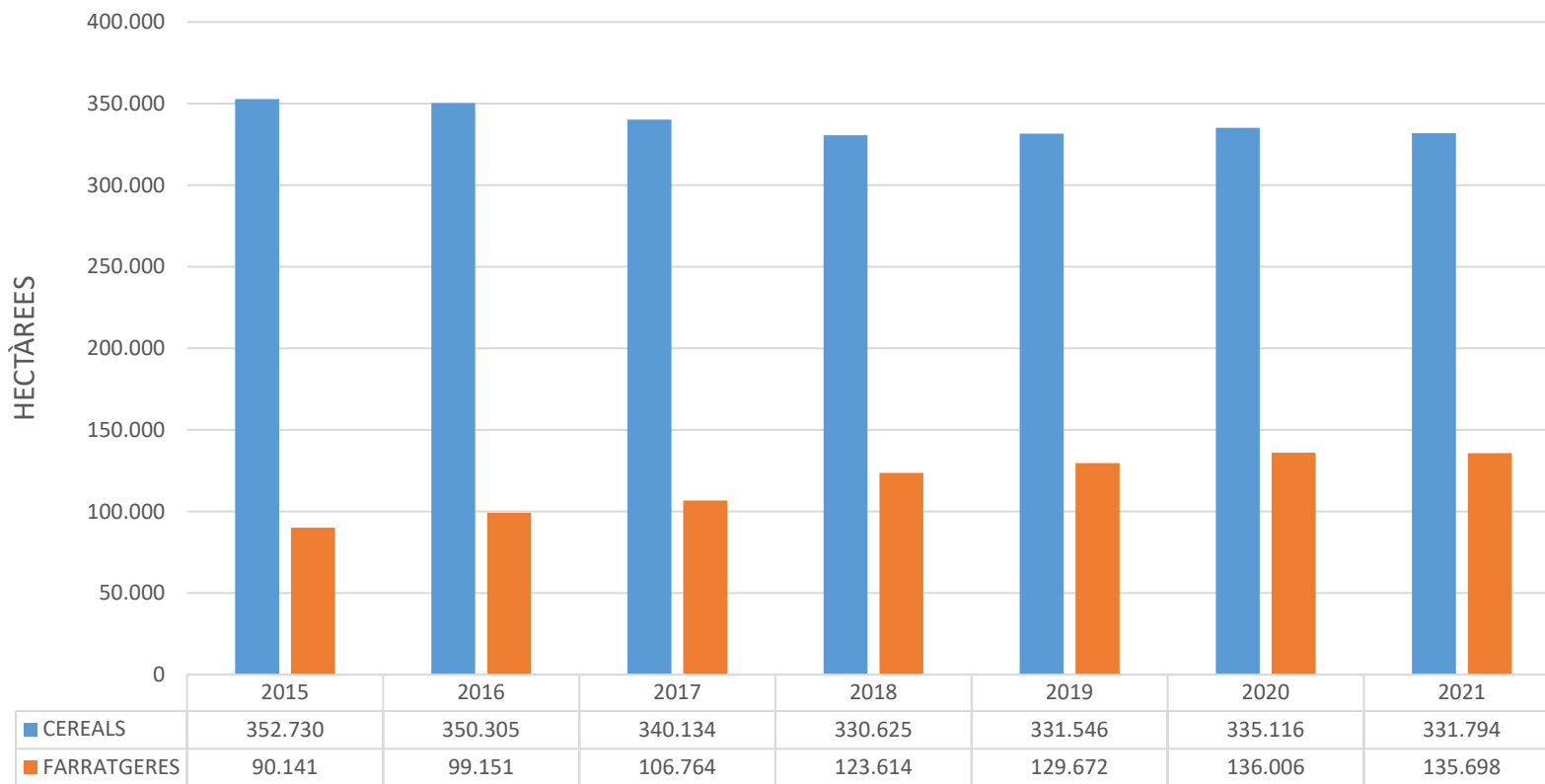
## INDEX

1. SUPERFÍCIES I PRODUCCIÓ
2. COMERÇ EXTERIOR
3. CONSUM
4. PREUS PERCEBUTS PEL PAGÈS
5. PREUS EN LLOTGES
6. PREUS EN MERCATS REPRESENTATIUS
7. FONTS I ENLLACOS DE INTERÉS



# SECTOR CEREALS

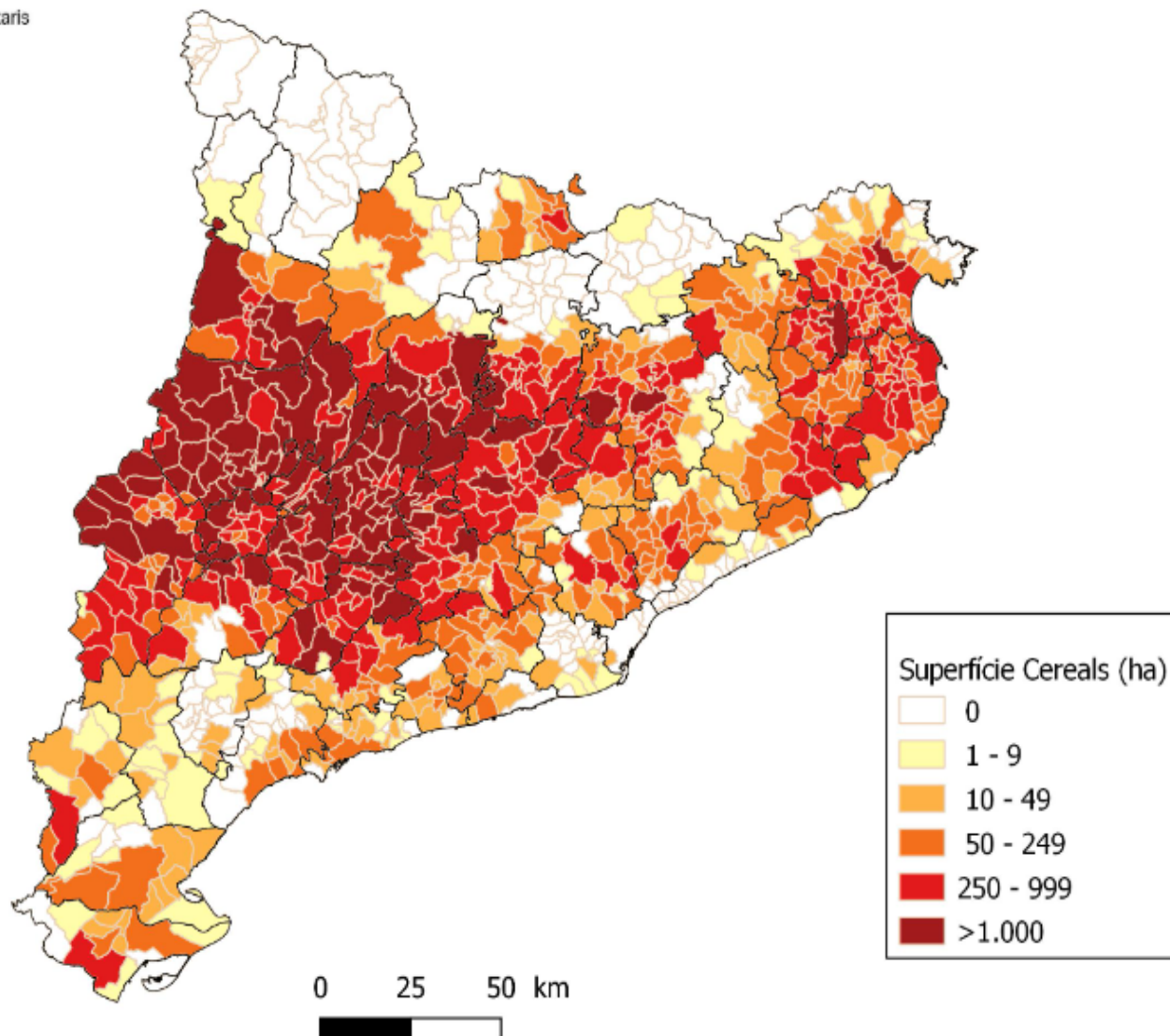
## SUPERFÍCIES DE CEREALS I FARRATGERES A CATALUNYA (2015-2021)



Font: Servei d'Estadística i Preus Agroalimentaris – Gabinet Tècnic.

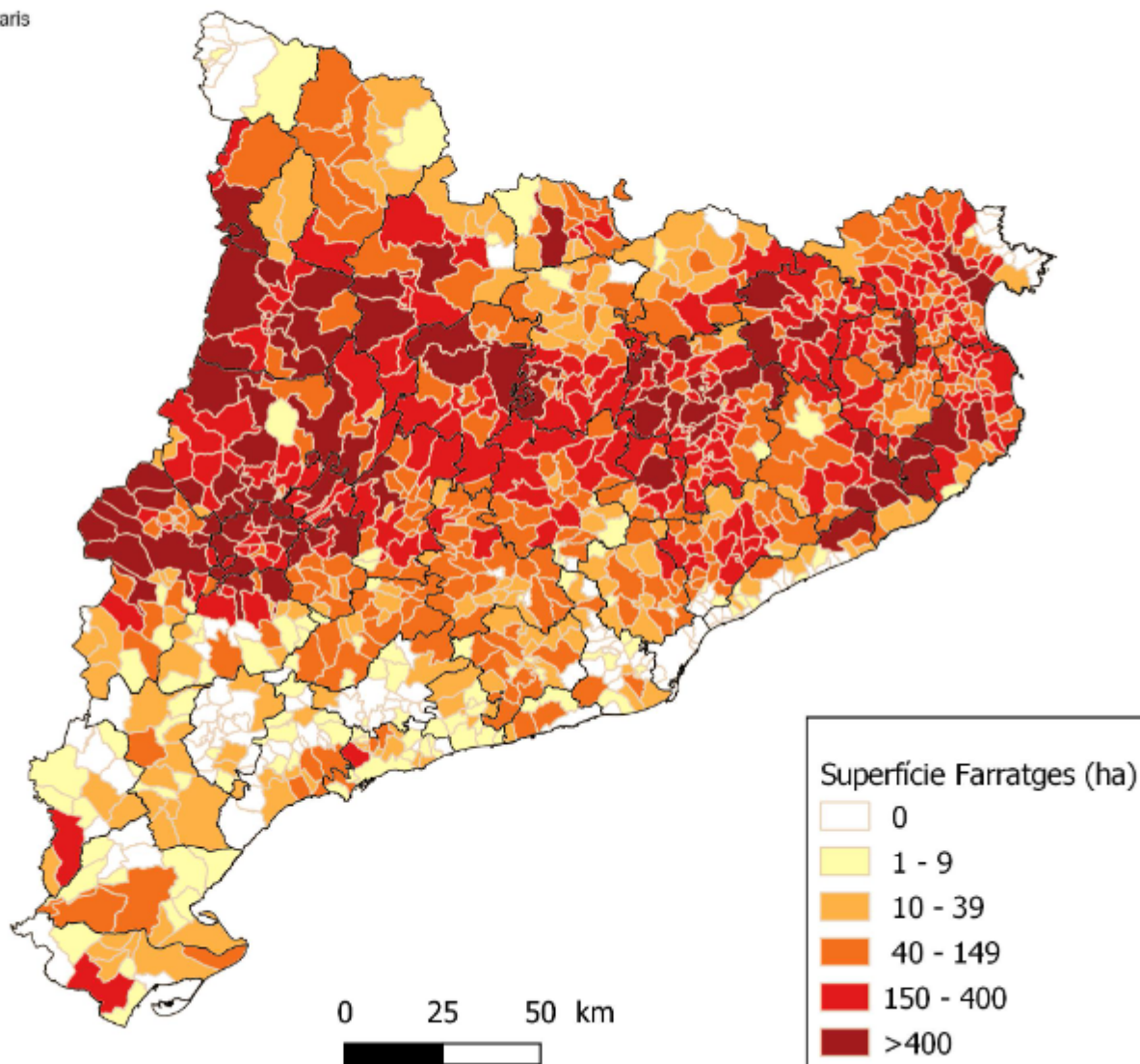
## SUPERFÍCIES MUNICIPALS DE CEREALS EXCEPTE ARRÒS A CATALUNYA 2021

TOTAL DE CEREALS A CATALUNYA: 310.815 ha



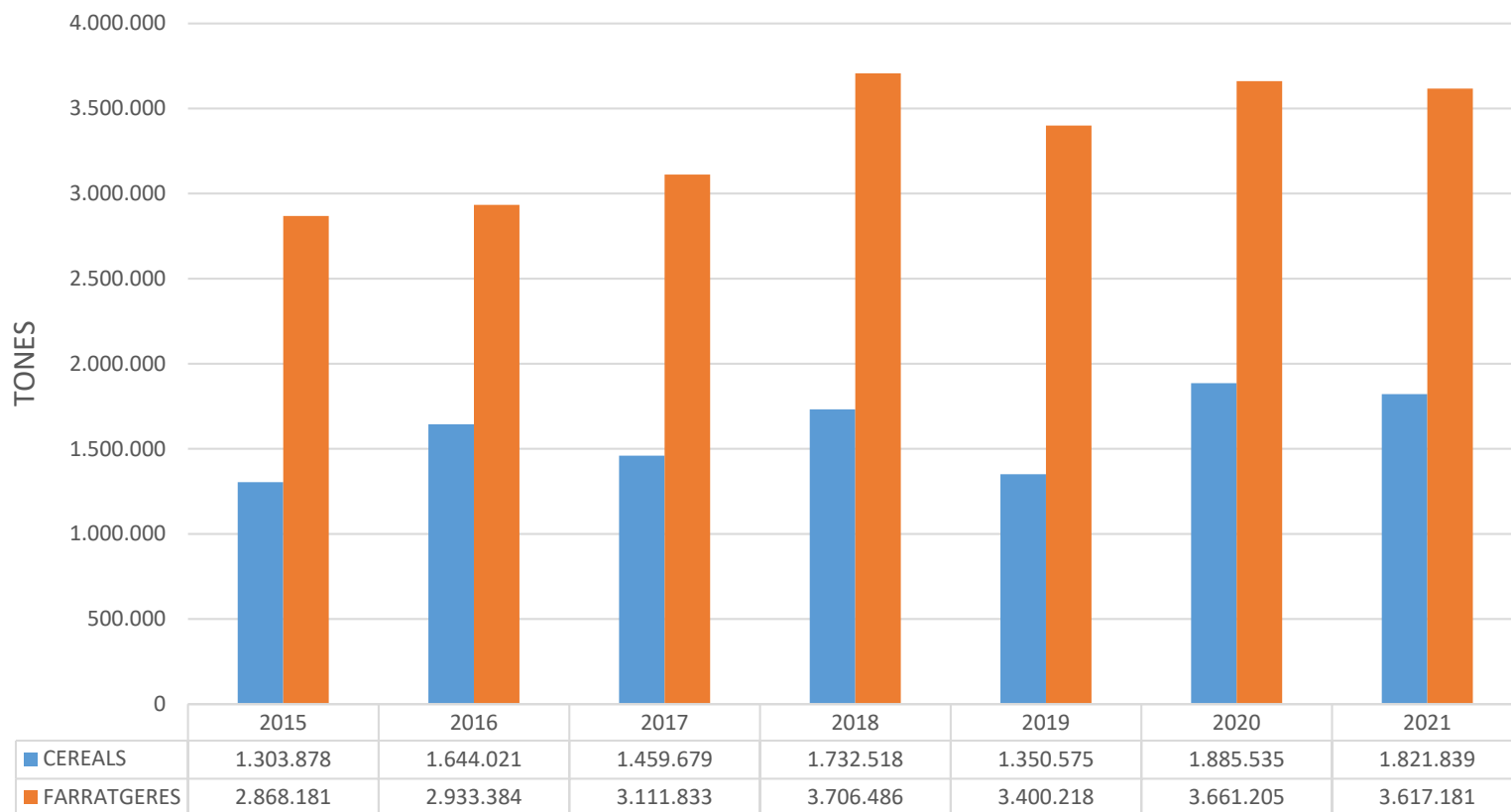
## SUPERFÍCIES MUNICIPALS DE FARRATGES A CATALUNYA 2021

TOTAL DE FARRATGES A CATALUNYA: 135.698 ha

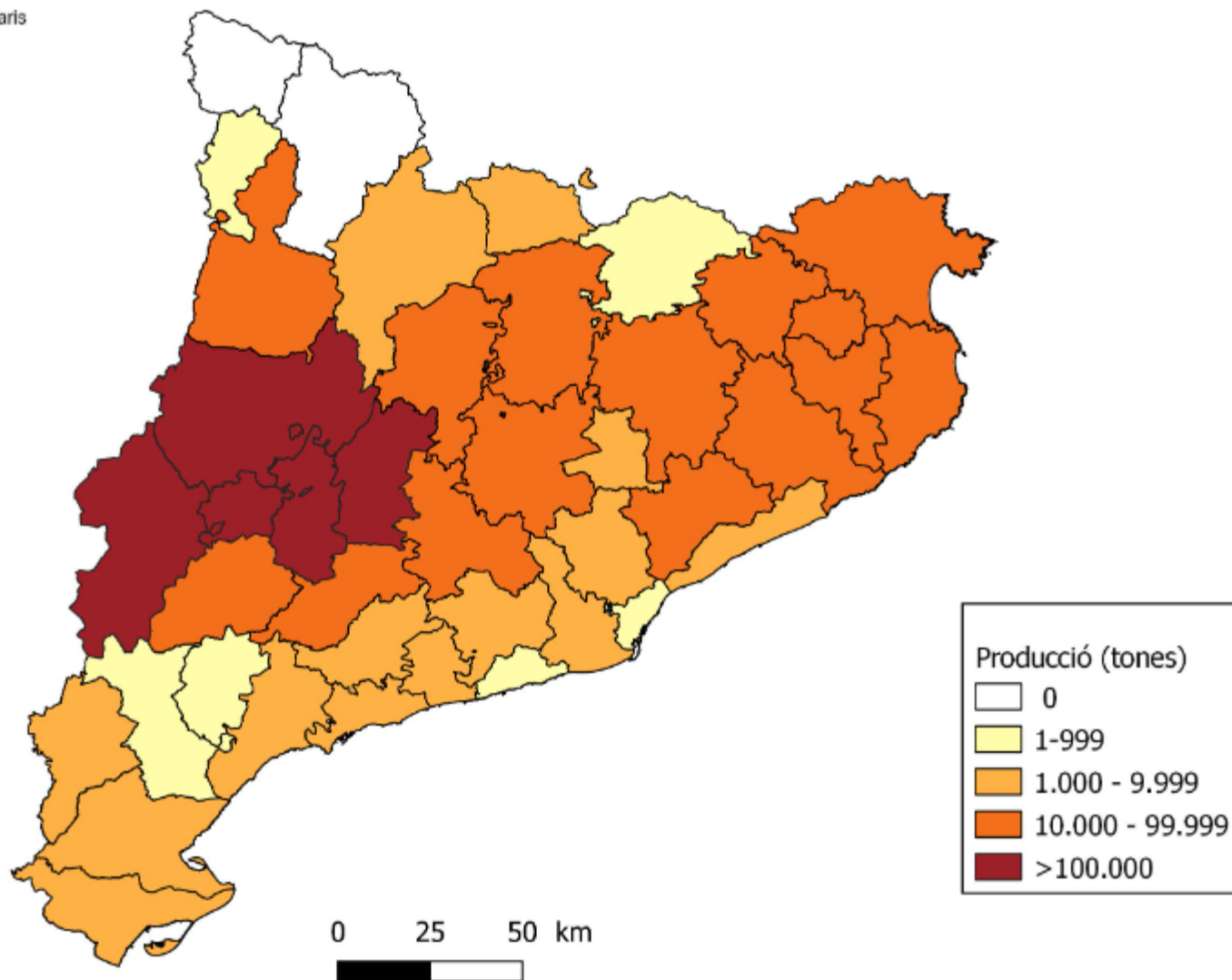


# SECTOR CEREALS

## PRODUCCIONS DE CEREALS I FARRATGERES A CATALUNYA (2015-2021)

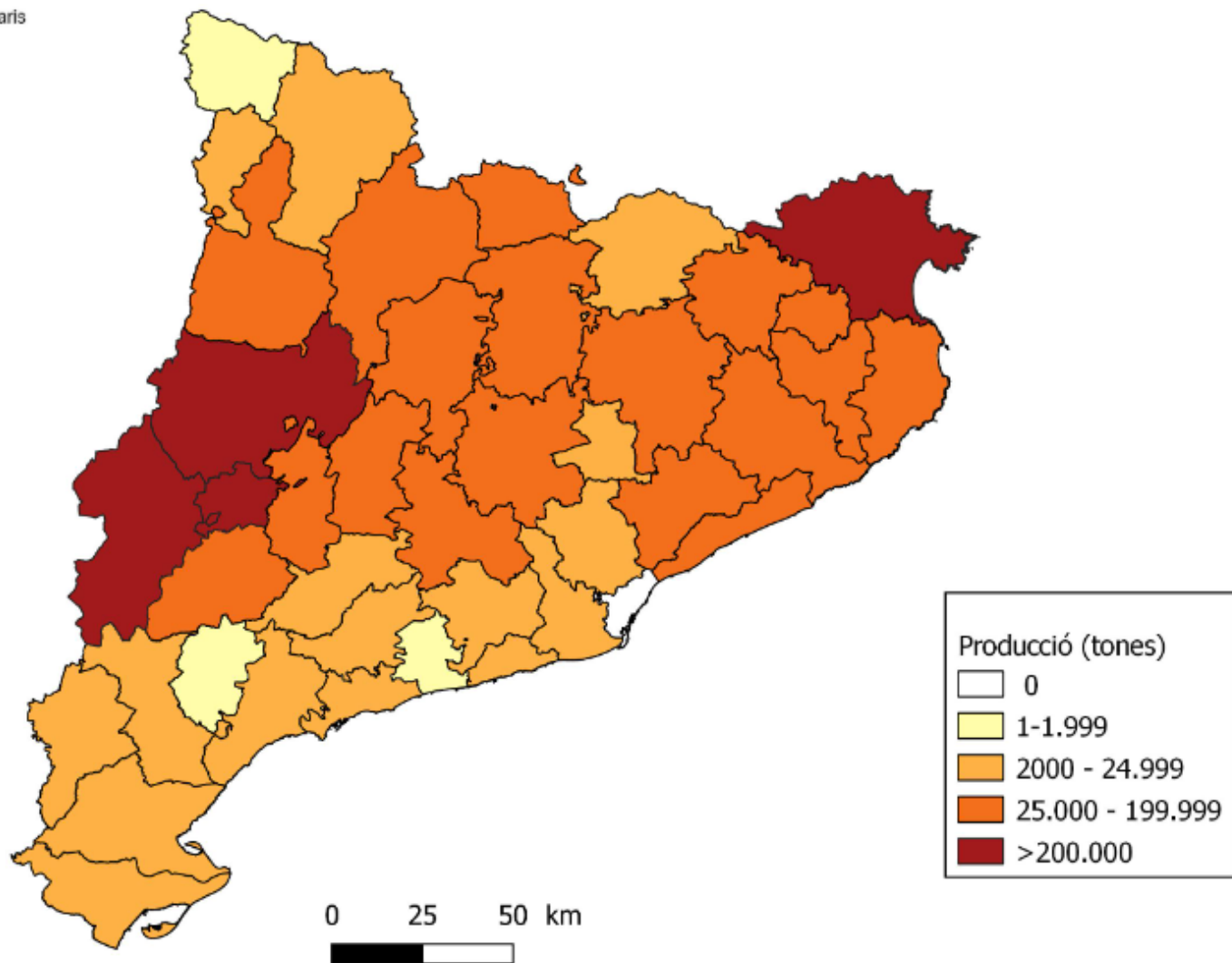


Font: Servei d'Estadística i Preus Agroalimentaris – Gabinet Tècnic.





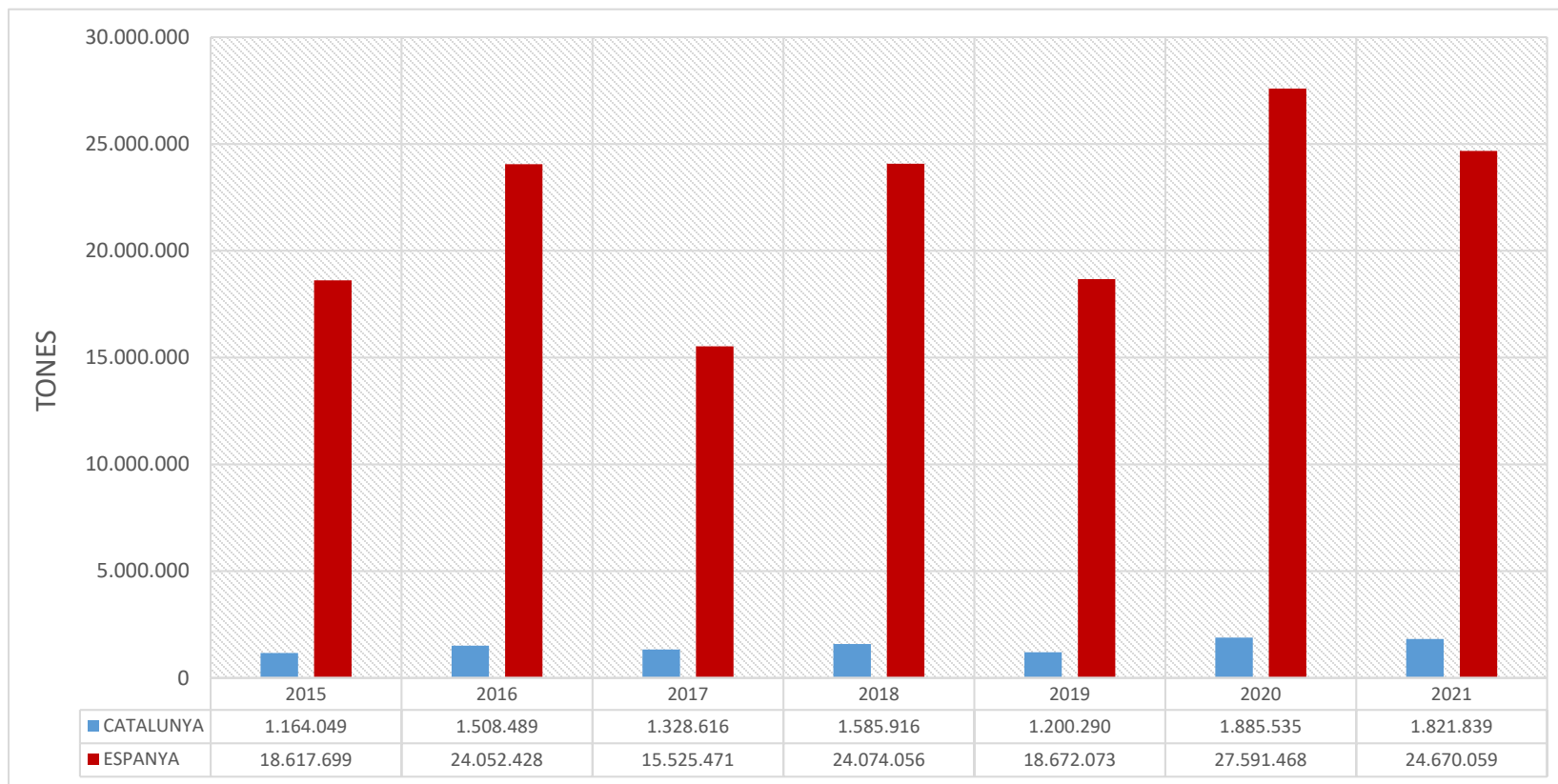
PRODUCCIÓ COMARCAL DE CONREUS FARRATGERS A CATALUNYA 2021  
TOTAL CATALUNYA: 3.617.181 TONES





# SECTOR CEREALS

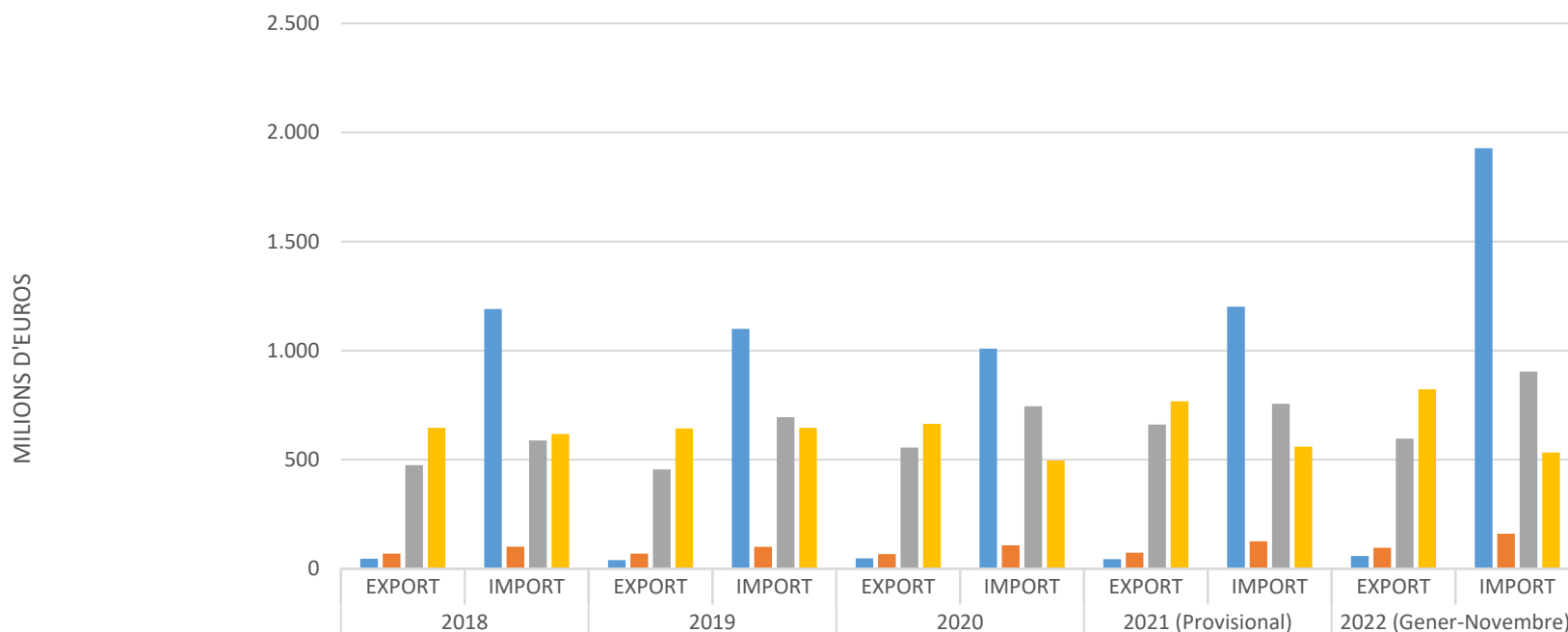
## PRODUCCIONS DE CEREALS A CATALUNYA I A ESPANYA (2015-2021)



Font: Servei d'Estadística i Preus Agroalimentaris – Gabinet Tècnic.  
Federación de Cooperativas Agroalimentarias.

# SECTOR CEREALS

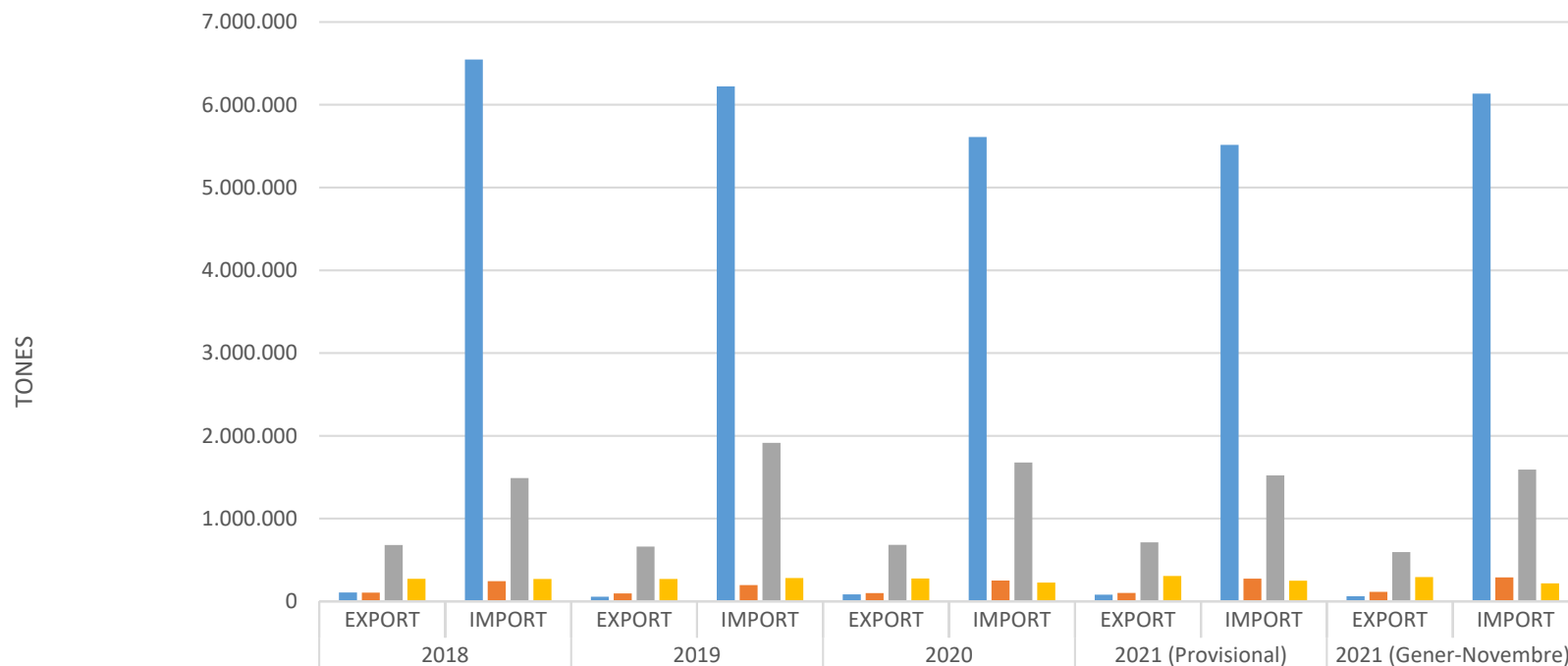
## EXPORTACIONS I IMPORTACIONS DE CEREALS I DERIVATS A CATALUNYA (2018-Nov. 2022) – M€



■ CEREALS	46	1.191	40	1.100	48	1.009	44	1.201	59	1.928
■ PRODUCTES DE MOLINERIA	69	101	70	100	68	108	74	126	96	161
■ RESIDUS I TORTONS	475	588	455	695	555	745	661	756	597	904
■ PREPARACIONS DE CEREALS I PASTISSERIA	646	618	643	646	665	497	768	560	823	533

# SECTOR CEREALS

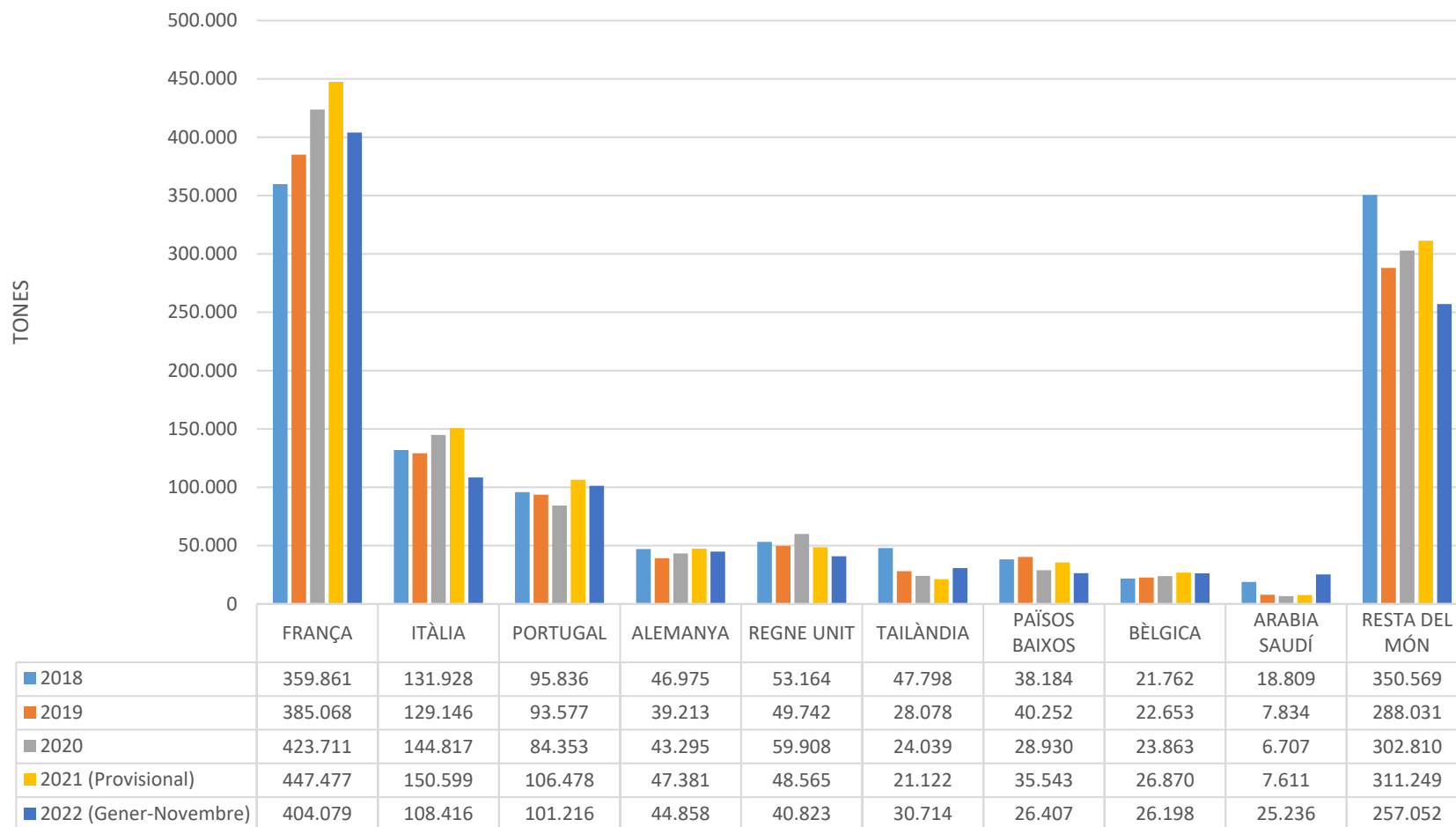
## EXPORTACIONS I IMPORTACIONS DE CEREALS I DERIVATS A CATALUNYA (2018- Nov. 2022) - Tones



	2018		2019		2020		2021 (Provisional)		2021 (Gener-Novembre)	
	EXPORT	IMPORT	EXPORT	IMPORT	EXPORT	IMPORT	EXPORT	IMPORT	EXPORT	IMPORT
CEREALS	106.642	6.547.129	56.717	6.222.811	84.349	5.611.006	81.092	5.515.588	61.080	6.135.000
PRODUCTES DE MOLINERIA	104.733	244.080	94.812	195.634	99.118	251.735	101.466	274.981	115.151	289.168
RESIDUS I TORTONS	680.355	1.489.131	661.165	1.915.677	683.222	1.677.424	713.849	1.522.427	595.407	1.592.804
PREPARACIONS DE CEREALS I PASTISSERIA	273.157	270.327	270.900	282.573	275.747	227.537	306.487	248.896	293.360	217.829

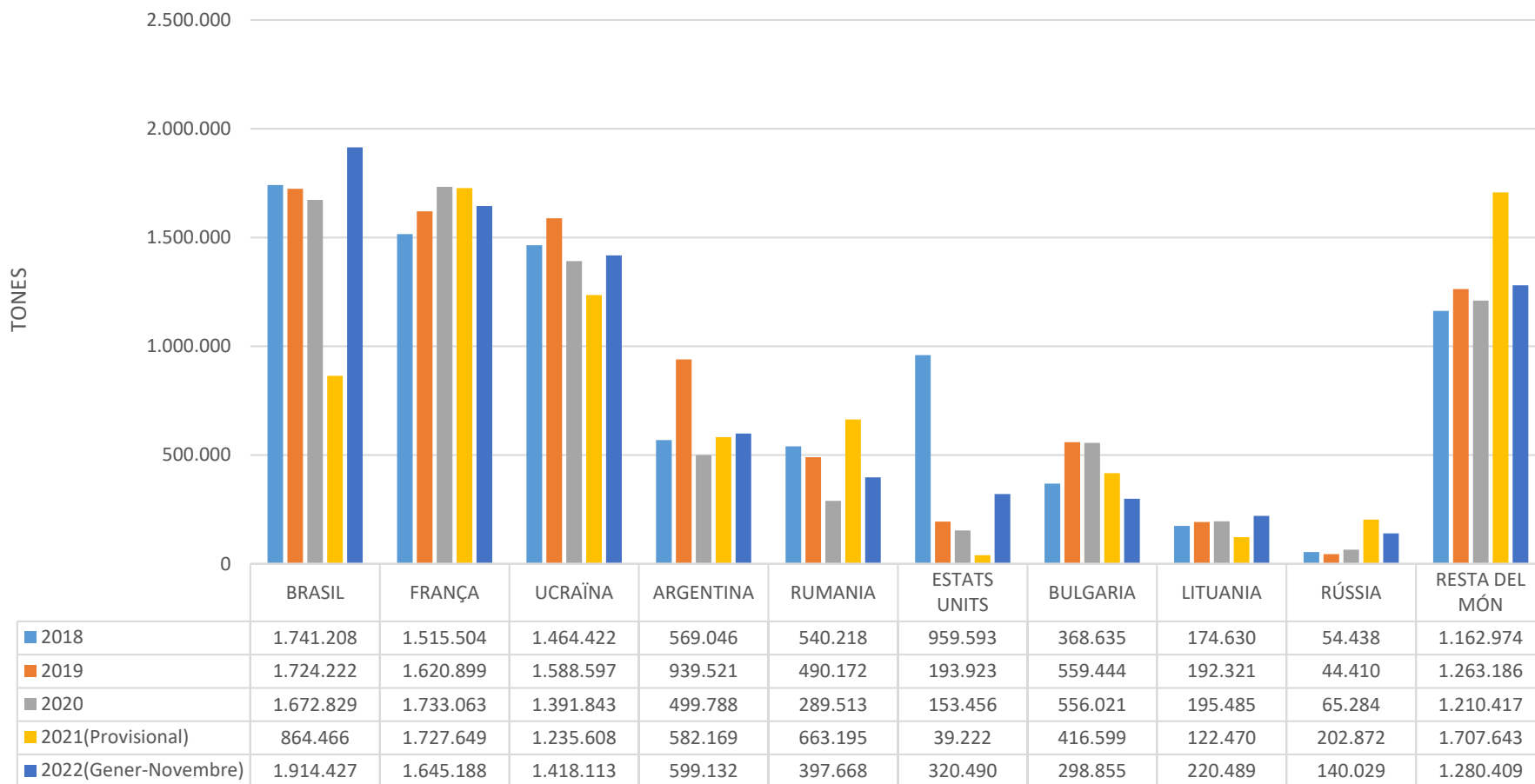
# SECTOR CEREALS

## PRINCIPALS PAÏSOS DESTINATARIS DE LES EXPORTACIONS DE CATALUNYA DE CEREALS I DERIVATS (2018-Nov. 2022)



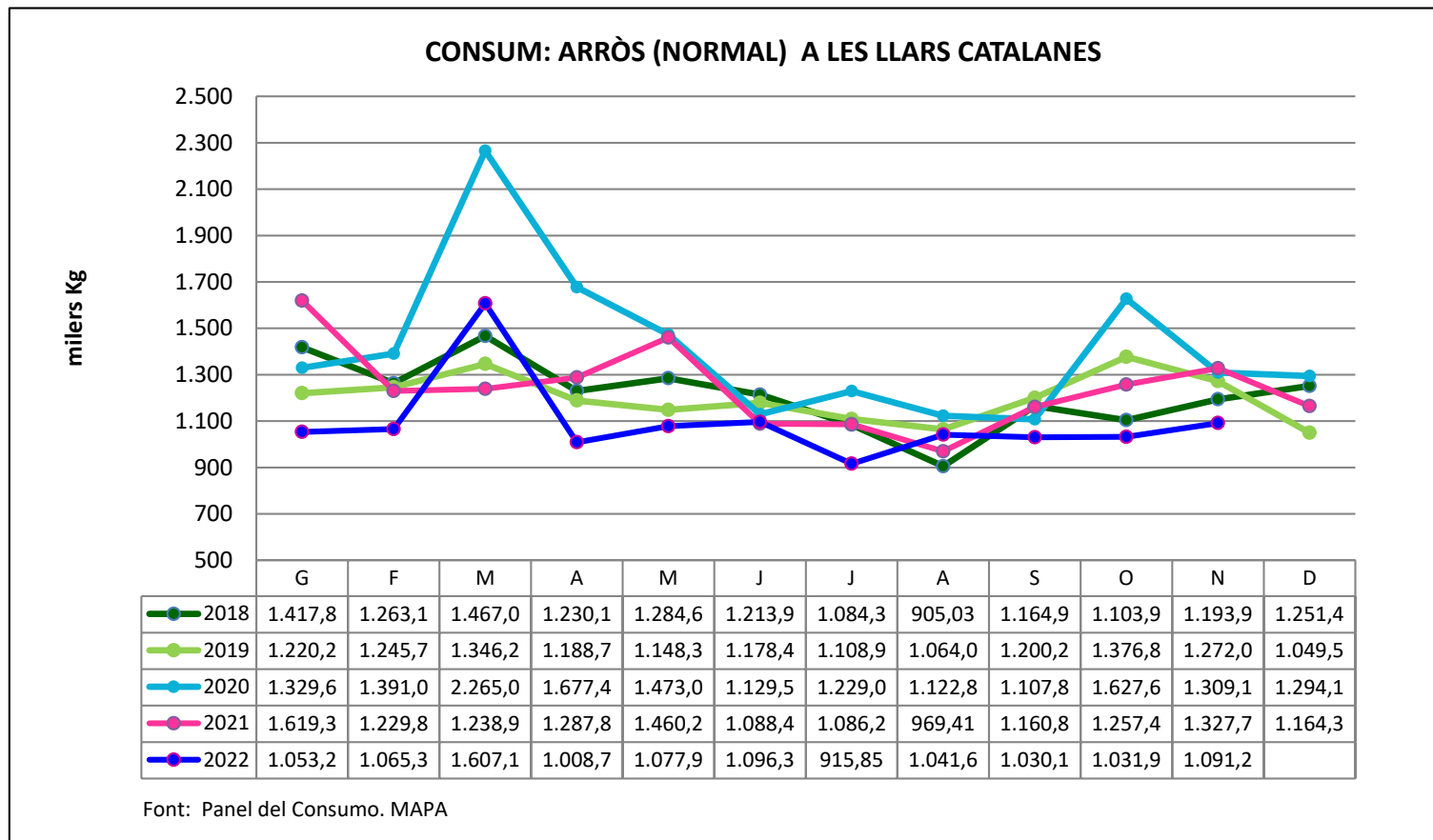
# SECTOR CEREAIS

## PRINCIPALS PAÏSOS SUBMINISTRADORS DE CEREAIS I DERIVATS A CATALUNYA (2018-Nov. 2022)



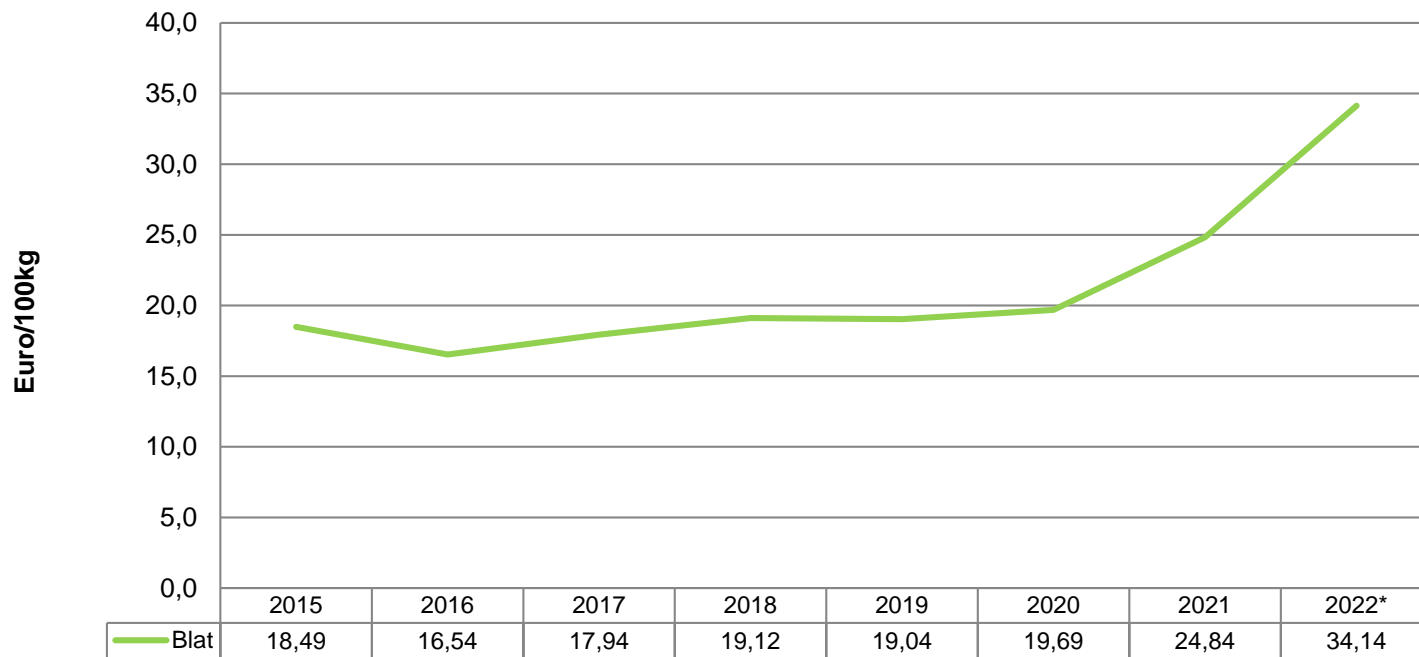
# SECTOR CEREAIS

## CONSUM A LES LLARS DE CATALUNYA: ARRÒS 2018 ⇔ 2022



# SECTOR CEREALS

## PREUS PERCEBUTS PEL PAGÈS A CATALUNYA: BLAT

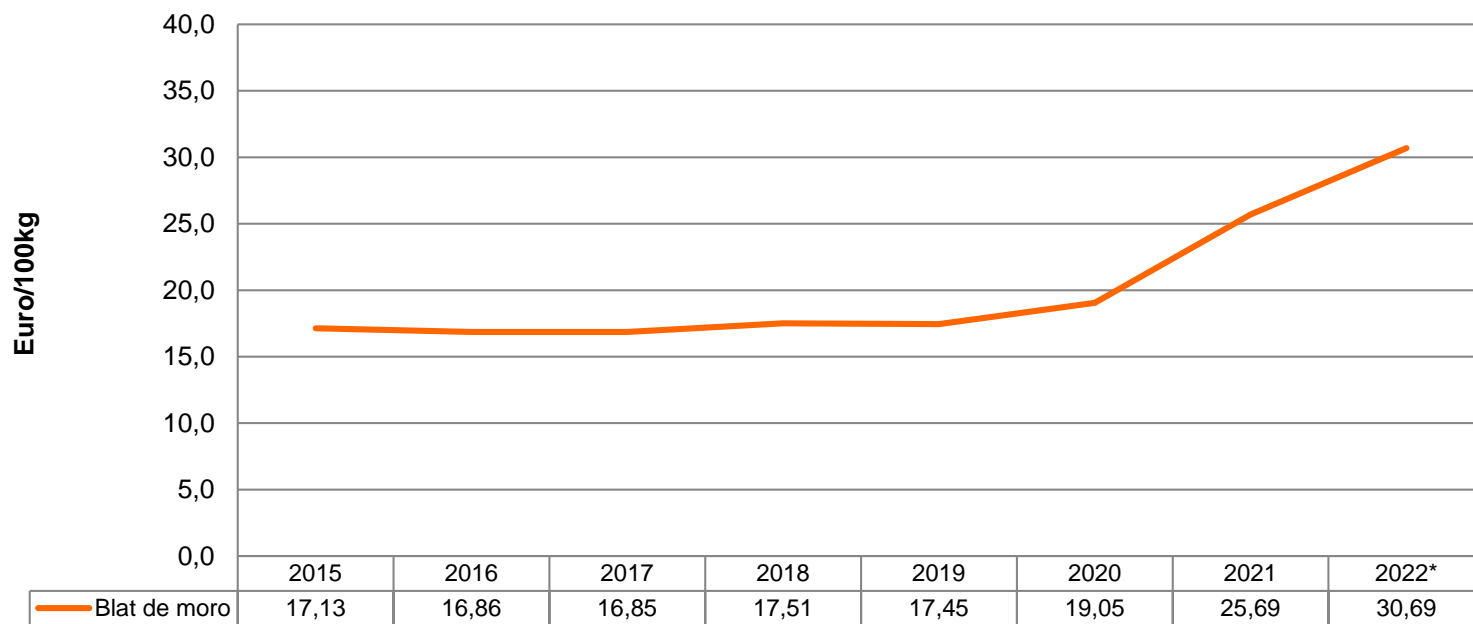


Servei d'Estadística i Preus Agroalimentaris - Gabinet Tècnic - DACC

\*2022: dades fins a novembre

# SECTOR CEREALS

## PREUS PERCEBUTS PEL PAGÈS A CATALUNYA: BLAT DE MORO



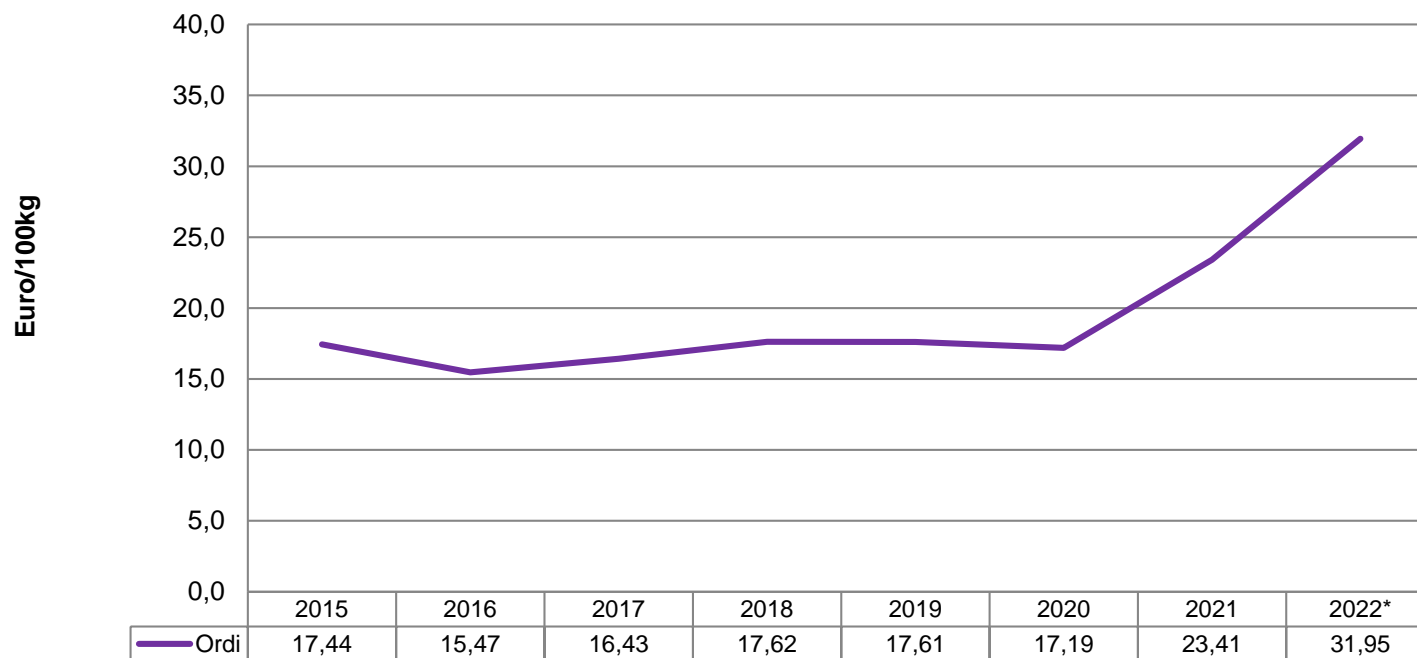
Servei d'Estadística i Preus Agroalimentaris - Gabinet Tècnic - DACC

\*2022: dades fins a novembre



# SECTOR CEREALS

## PREUS PERCEBUTS PEL PAGÈS A CATALUNYA: ORDI

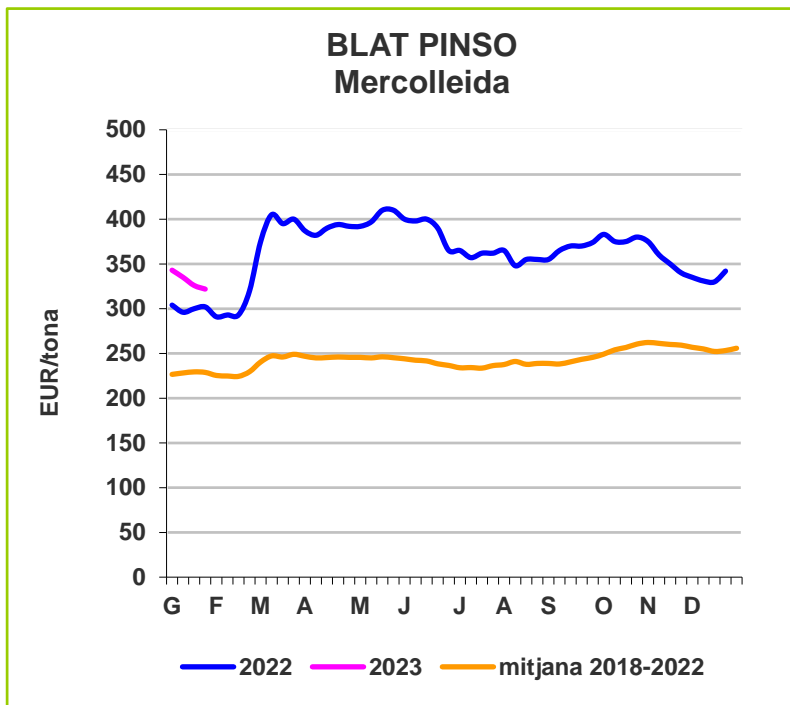
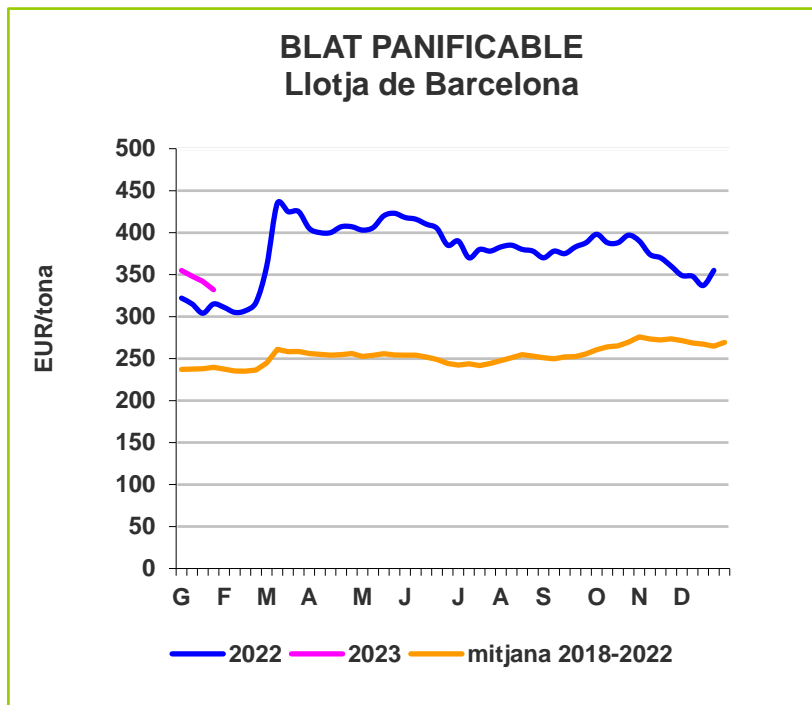


Font: Servei d'Estadística i Preus Agroalimentaris - Gabinet Tècnic - DACC

\*2022: dades fins a novembre

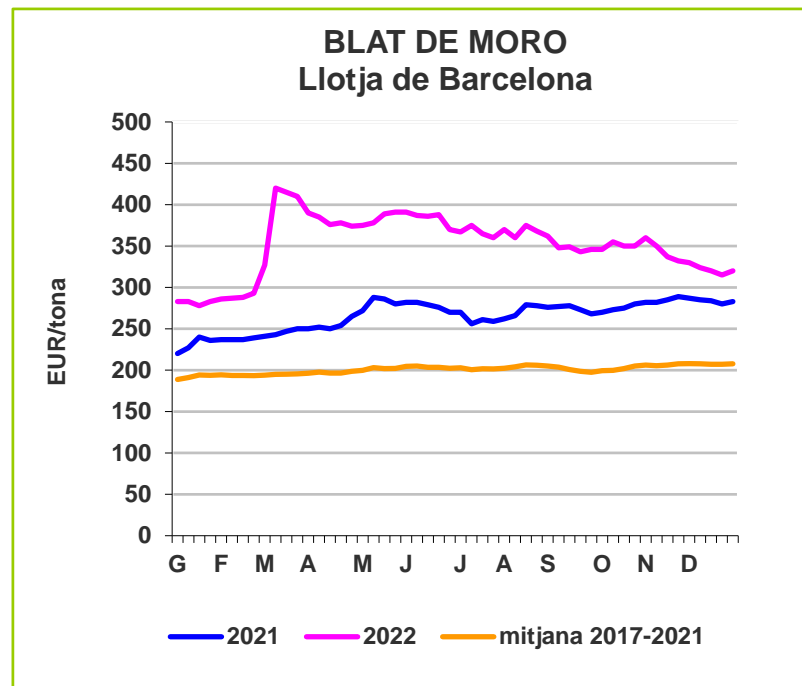
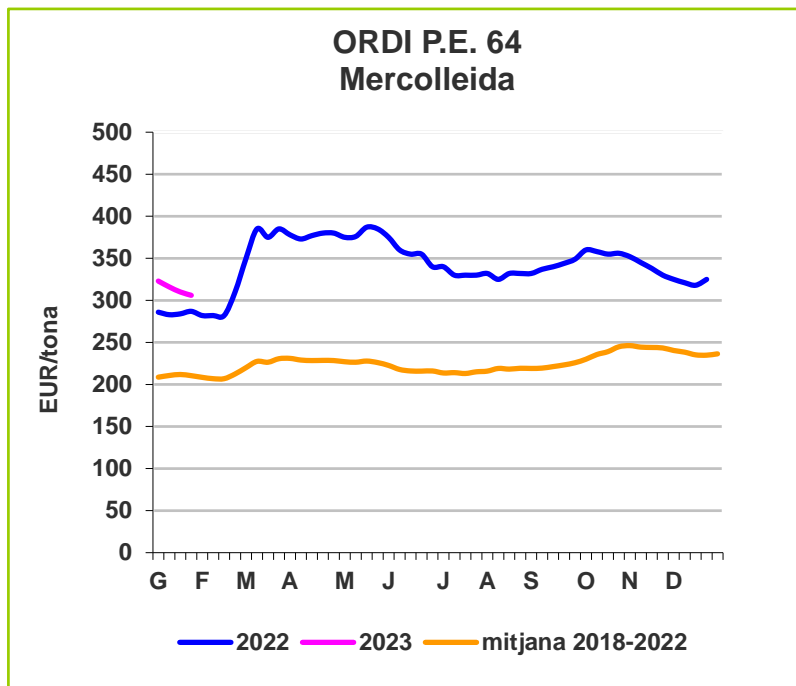
# SECTOR CEREALS

## PREUS EN LLOTGES:



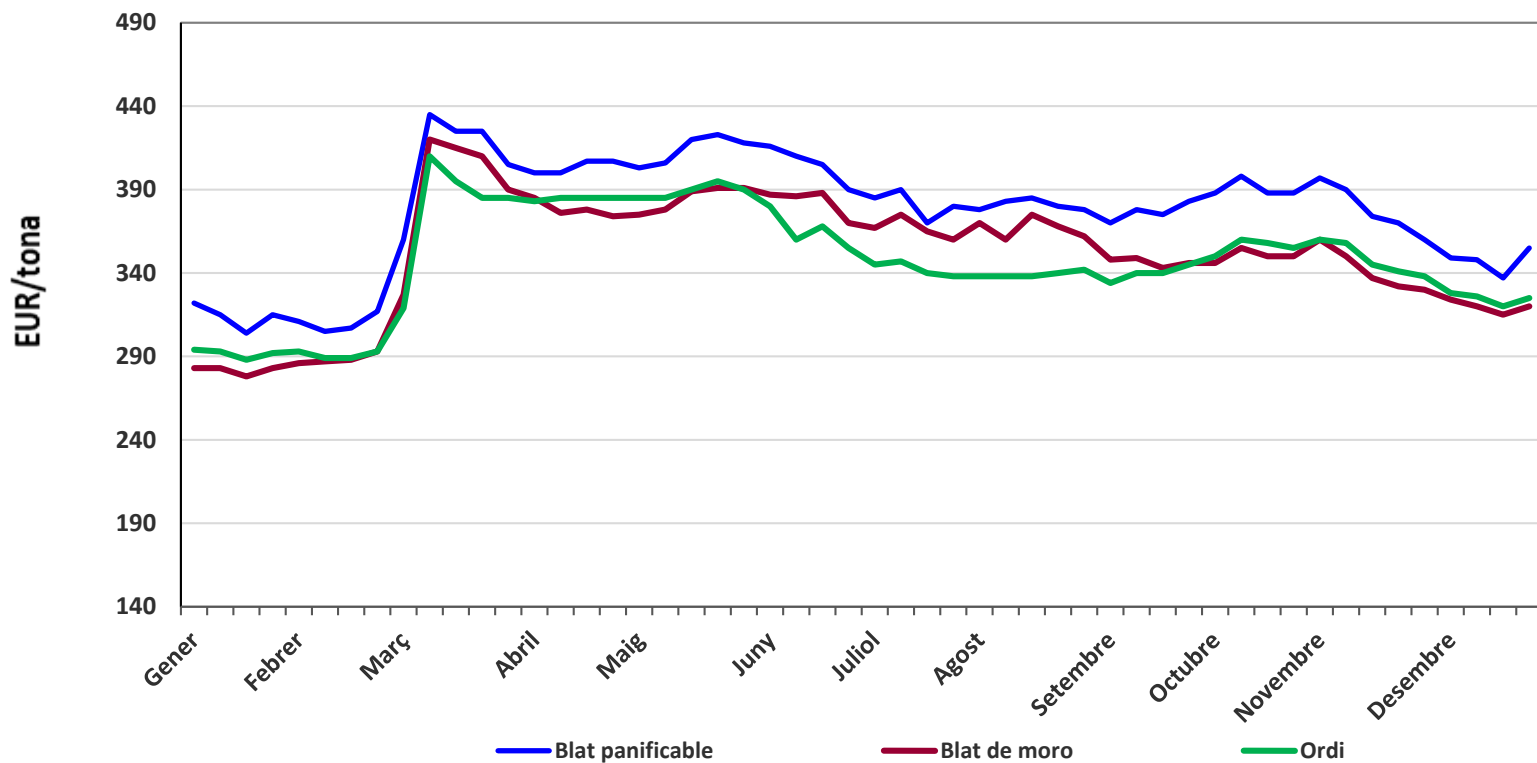
# SECTOR CEREALS

## PREUS EN LLOTGES:



# SECTOR CEREAIS

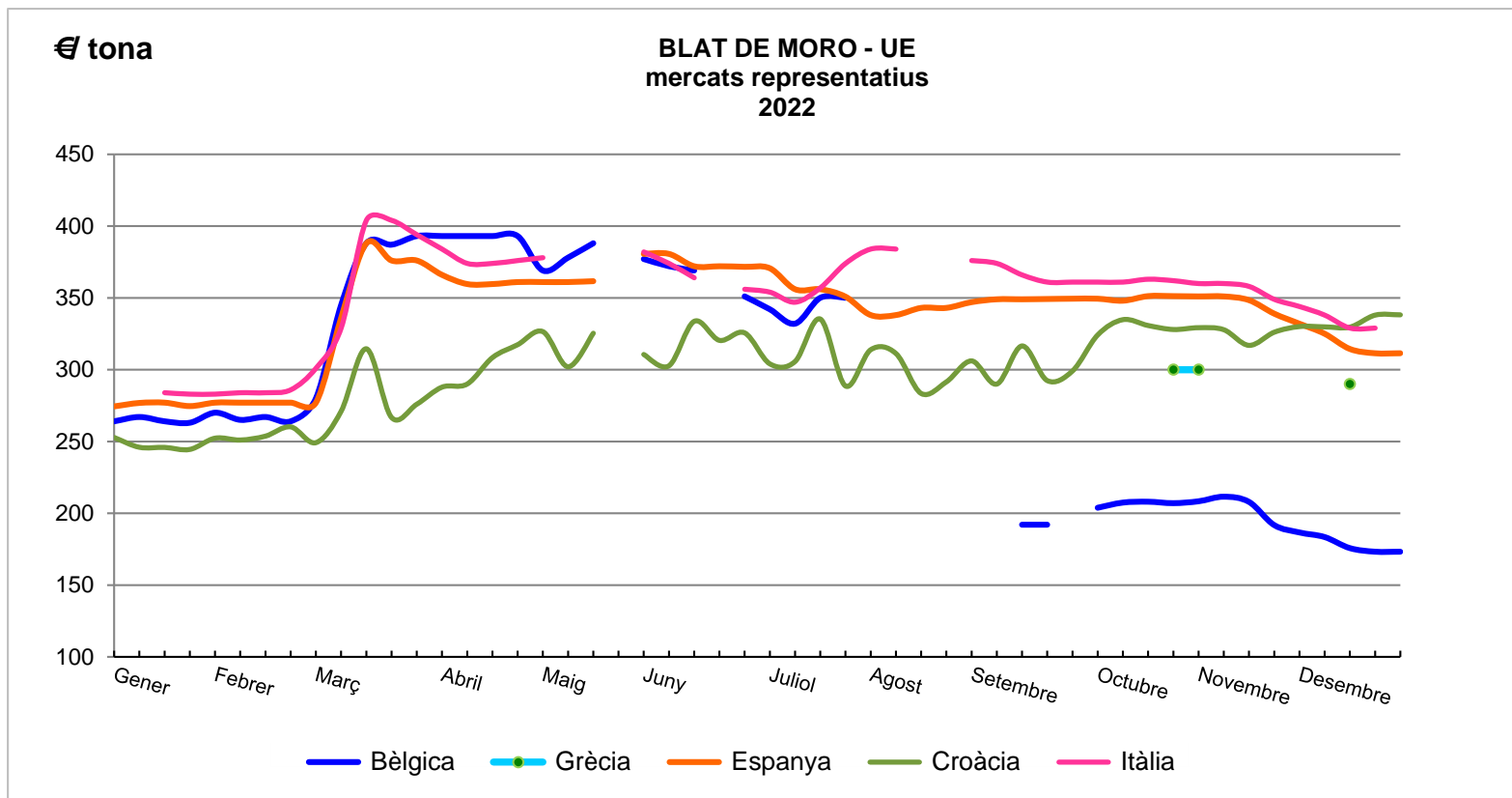
## PREUS EN LLOTGES: Preus Llotja de Cereals de Barcelona, any 2021



Servei d'Estadística i Preus Agroalimentaris - Gabinet Tècnic - DACC

# SECTOR CEREALS

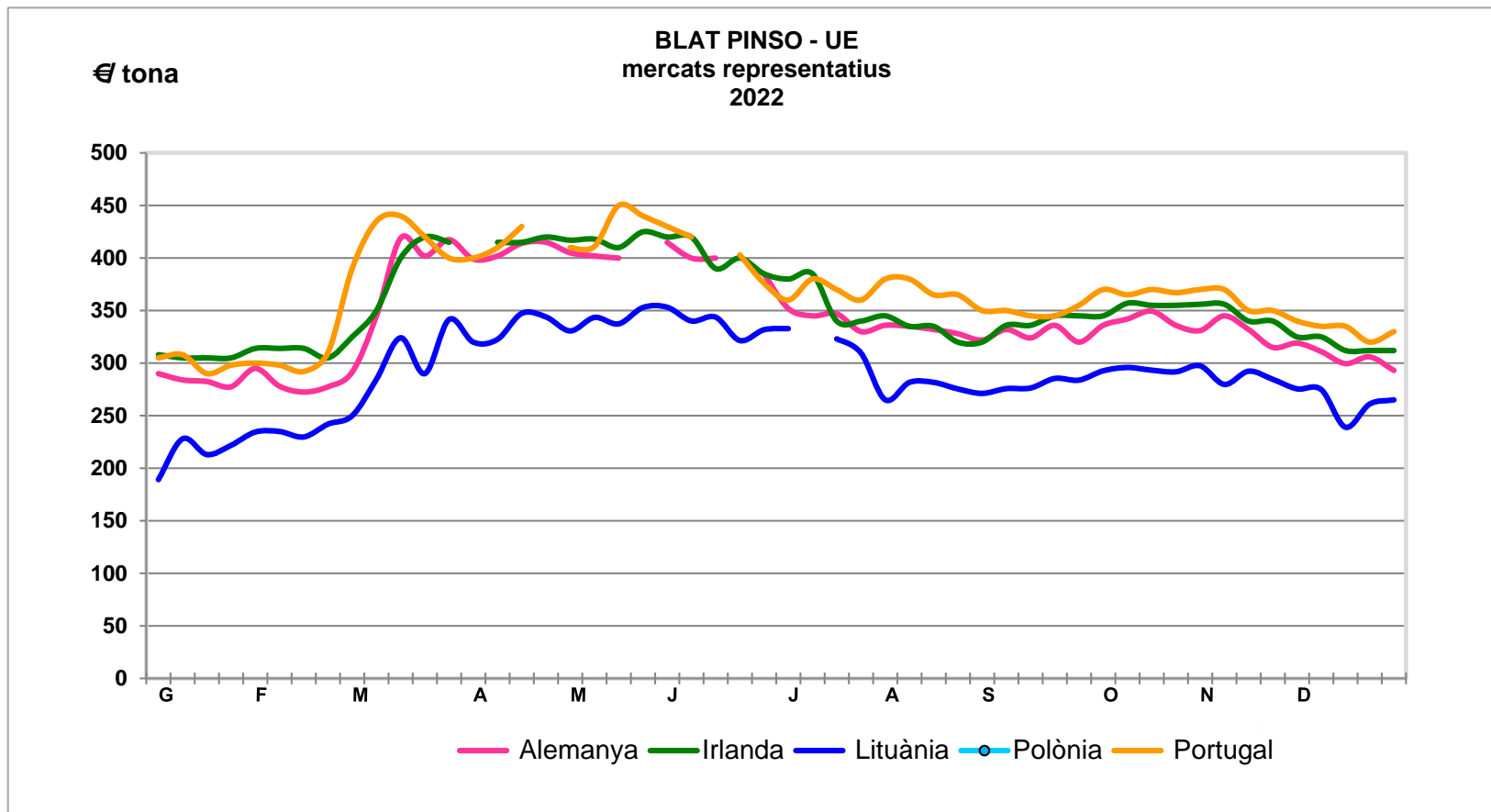
## PREUS EN MERCATS REPRESENTATIUS:



Font: Comissió Europea /Servei d'Estadística i Preus Agroalimentaris - Gabinet Tècnic - DACC

# SECTOR CEREALS

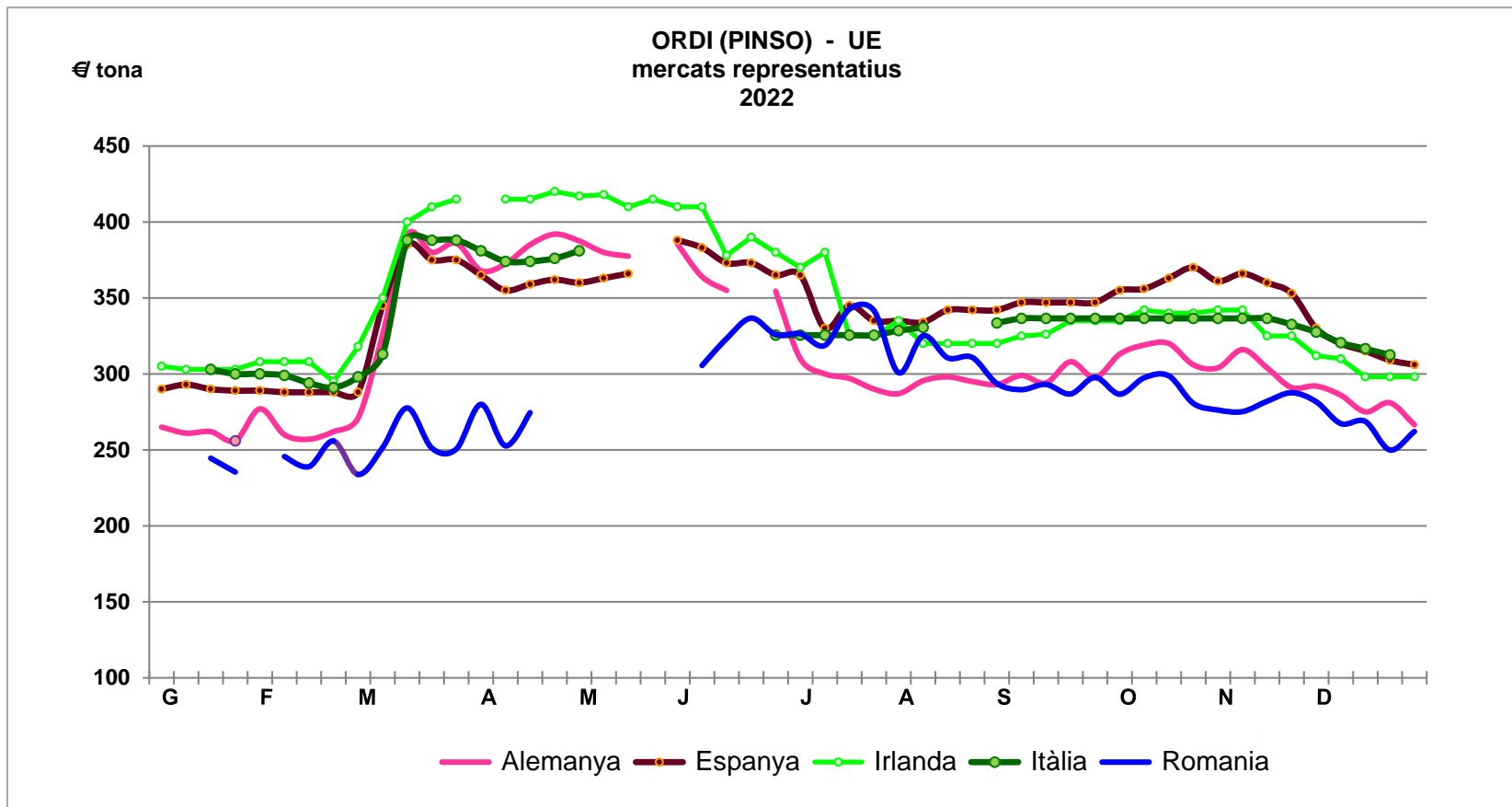
## PREUS EN MERCATS REPRESENTATIUS:



Font: Comissió Europea /Servei d'Estadística i Preus Agroalimentaris - Gabinet Tècnic - DACC

# SECTOR CEREALS

## PREUS EN MERCATS REPRESENTATIUS:

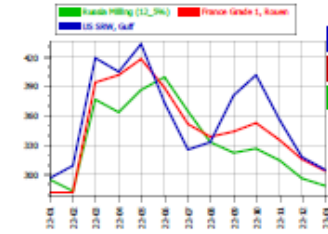


Font: Comissió Europea /Servei d'Estadística i Preus Agroalimentaris - Gabinet Tècnic - DACC

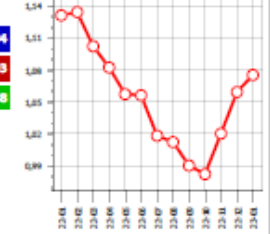
Export prices FOB on 24-01-2023

Name	€/t	\$/t	€/t (m/m var.)	\$/t (m/m var.)	€/t (y/y var.)	\$/t (y/y var.)
Wheat, Canada 1 CWAD, St. Lawrence	418	445	-4%	-2%	-32%	-35%
Wheat, EU (France) Grade 1, Rouen	292	317	-8%	-6%	+1%	-3%
Wheat, US HRW (1.1.5%), Gulf	344	374	-6%	-6%	-4%	-5%
Wheat, US SRW, Gulf	294	319	-9%	-7%	-4%	-8%
Durum wheat, EU (France), Port la Nouvelle	N.Q.	-	-	-	-	-
Barley, Black Sea Feed	257	279	8%	+2%	-3%	-6%
Barley, EU (France) Feed, Rouen	271	294	-6%	-4%	-1%	-5%
Maize, EU (France), Bordeaux	N.Q.	-	-	-	-	-
Maize, US 3YC, Gulf	280	304	-6%	-3%	+7%	+3%
Soybeans, US 2Y (Gulf)	546	593	-4%	-2%	+6%	+2%

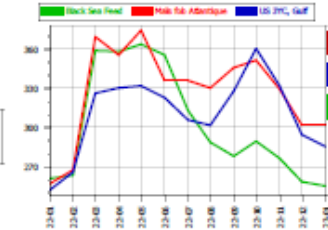
Wheat - monthly avg. export prices (fob)



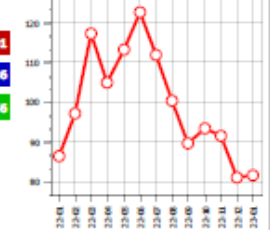
Exchange rate € vs \$



Maize - monthly avg. export prices (fob)

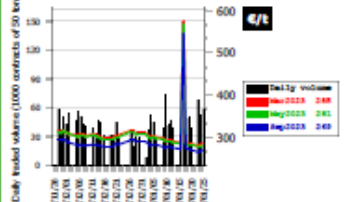


Brent Crude Oil

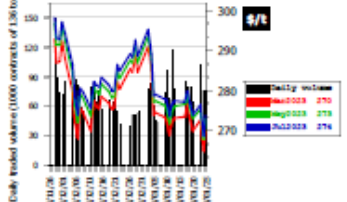


Prices

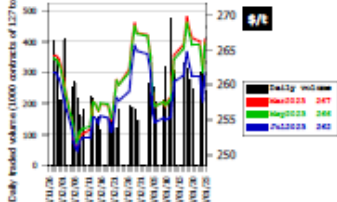
EU (milling) wheat futures terms - 60 days



US (SRW) wheat futures terms - 60 days

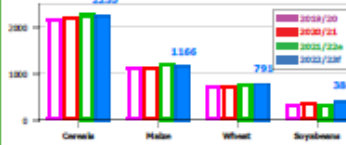


CHE US Maize futures terms - 60 days

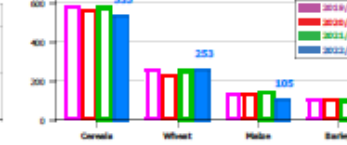


Production & Stocks

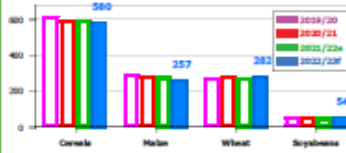
World production (million tonnes)



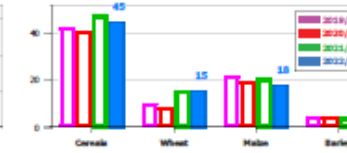
EU production (million tonnes)



World stocks (million tonnes)

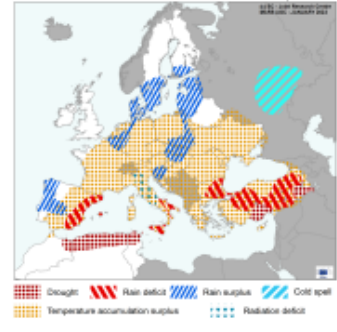


EU stocks (million tonnes)

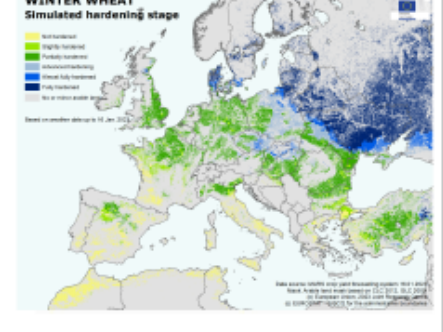


Weather & crops conditions

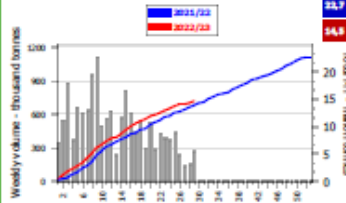
AREAS OF CONCERN - EXTREME WEATHER EVENTS



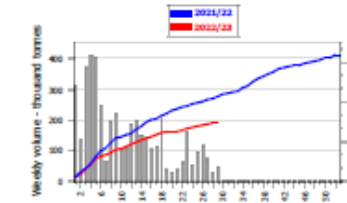
WINTER WHEAT Simulated hardening stage



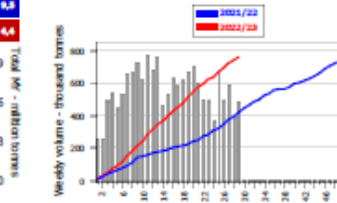
Common wheat & flour - exports



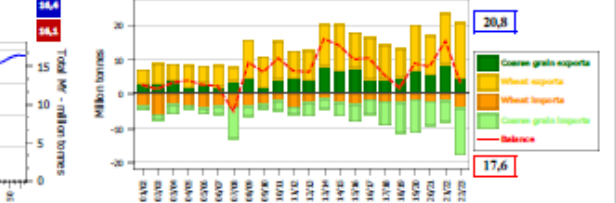
Barley, malt included - exports



Maize - imports



Cereals: trade evolution (EU countries) - July to November



Sources: European Commission (DG ESTAT, DG JRC, DG AGRI, DG TAXUD), European Central Bank, IGC, ICE, The Baltic Exchange, CME, MATIF, France Agrimer

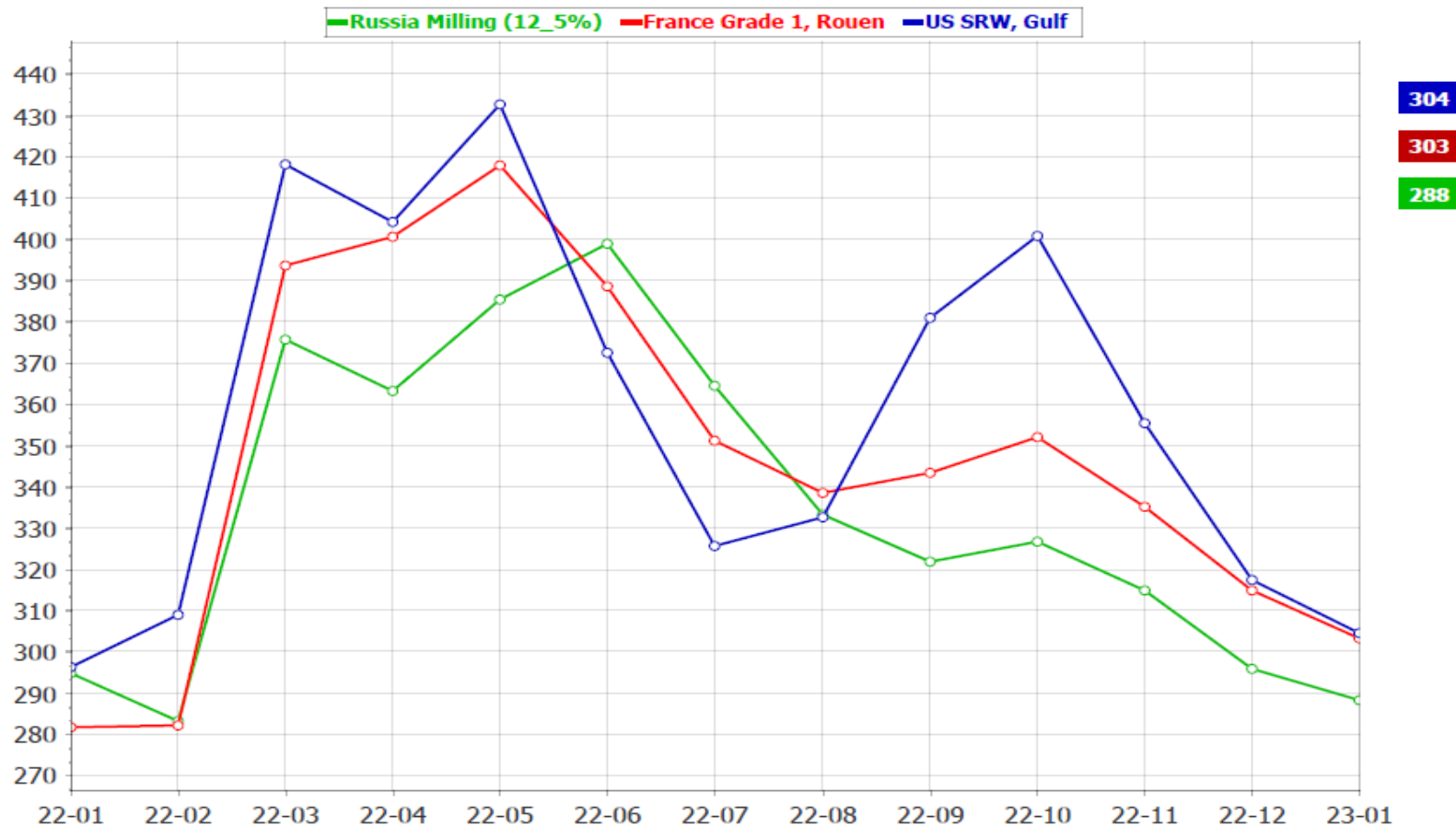
Font: Comissió Europea



Export prices FOB on 24-01-2023						
Name	€/t	\$/t	€/t (m/m var.)	\$/t (m/m var.)	€/t (y/y var.)	\$/t (y/y var.)
Wheat, Canada 1 CWAD, St_ Lawrence	410	445	▼ -4%	▼ -2%	▼ -32%	▼ -35%
Wheat, EU (France) Grade 1, Rouen	292	317	▼ -8%	▼ -6%	▲ +1%	▼ -3%
Wheat, US HIRW (11_5%), Gulf	344	374	▼ -6%	▼ -4%	▼ -1%	▼ -5%
Wheat, US SRW, Gulf	294	319	▼ -9%	▼ -7%	▼ -4%	▼ -8%
Durum wheat, EU (France), Port la Nouvelle	N.Q.	-	-	-	-	-
Barley, Black Sea Feed	257	279	0%	▲ +2%	▼ -3%	▼ -6%
Barley, EU (France) Feed, Rouen	271	294	▼ -6%	▼ -4%	▼ -1%	▼ -5%
Maize, EU (France), Bordeaux	N.Q.	-	-	-	-	-
Maize US 3YC, Gulf	280	304	▼ -6%	▼ -3%	▲ +7%	▲ +3%
Soyabeans, US 2Y (Gulf)	546	593	▼ -4%	▼ -2%	▲ +6%	▲ +2%

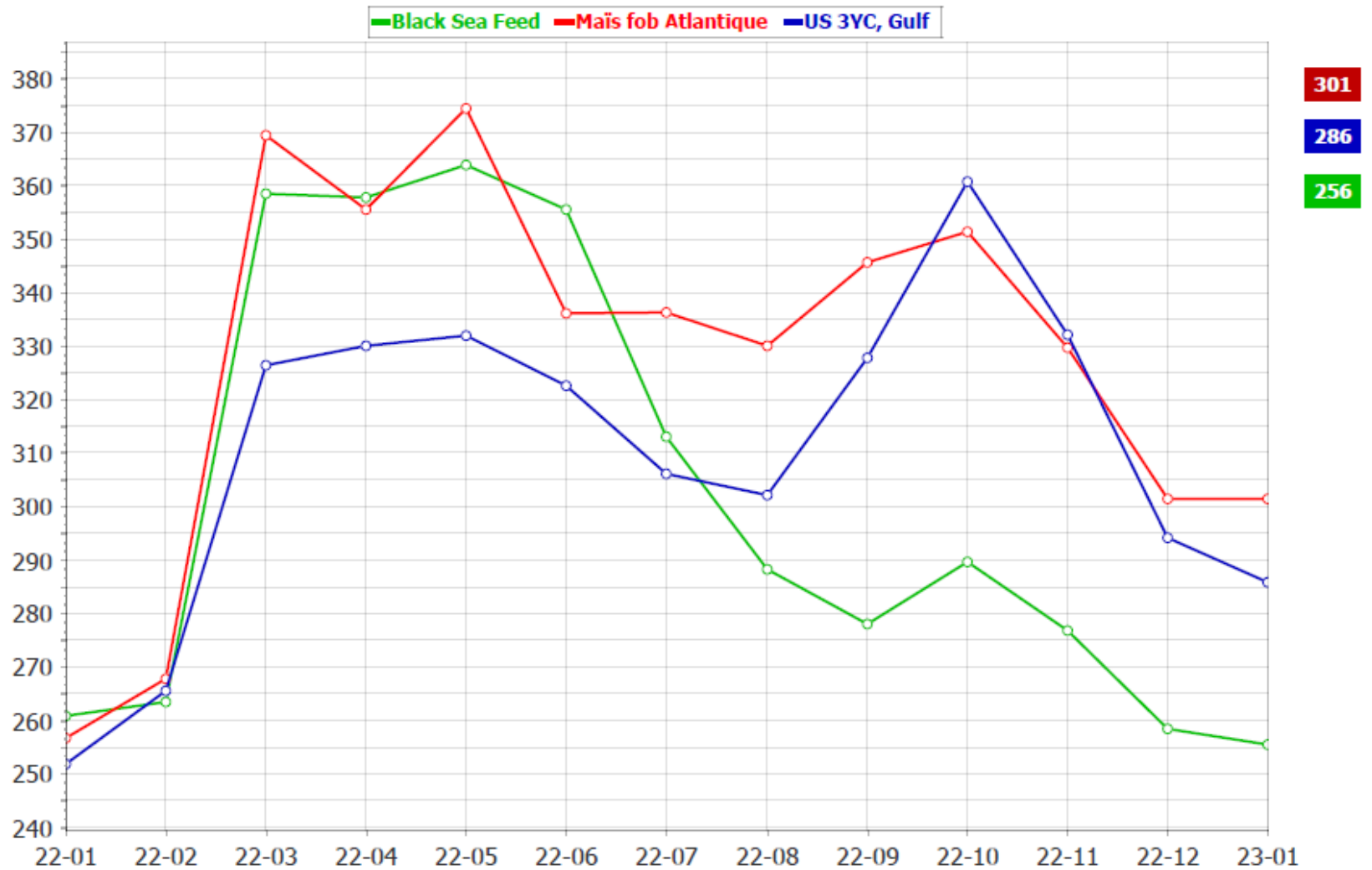
Sources: International Grains Council, France Agrimer

## Wheat - monthly avg. export prices (fob)



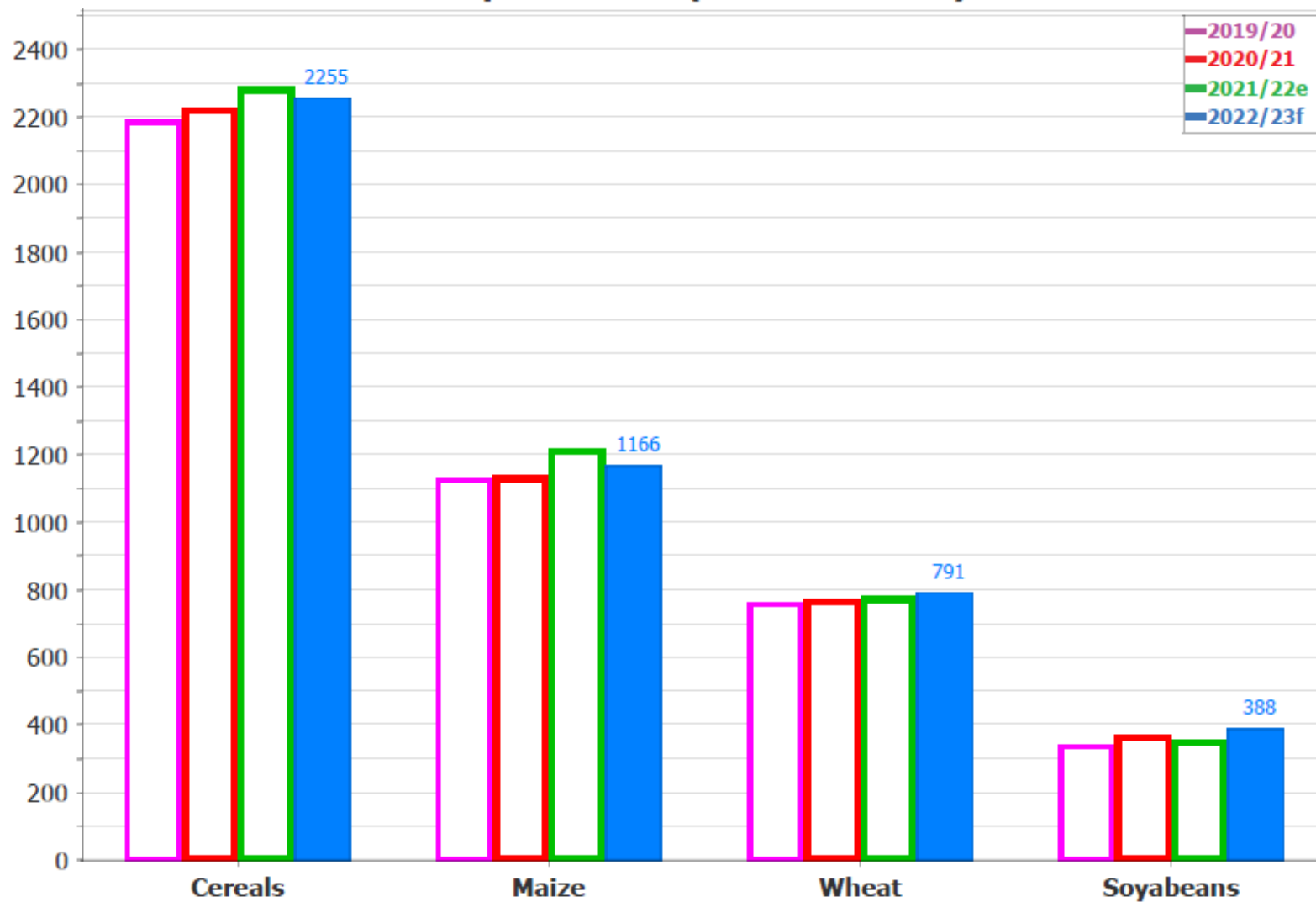
Source: International Grains Council

## Maize - monthly avg. export prices (fob)



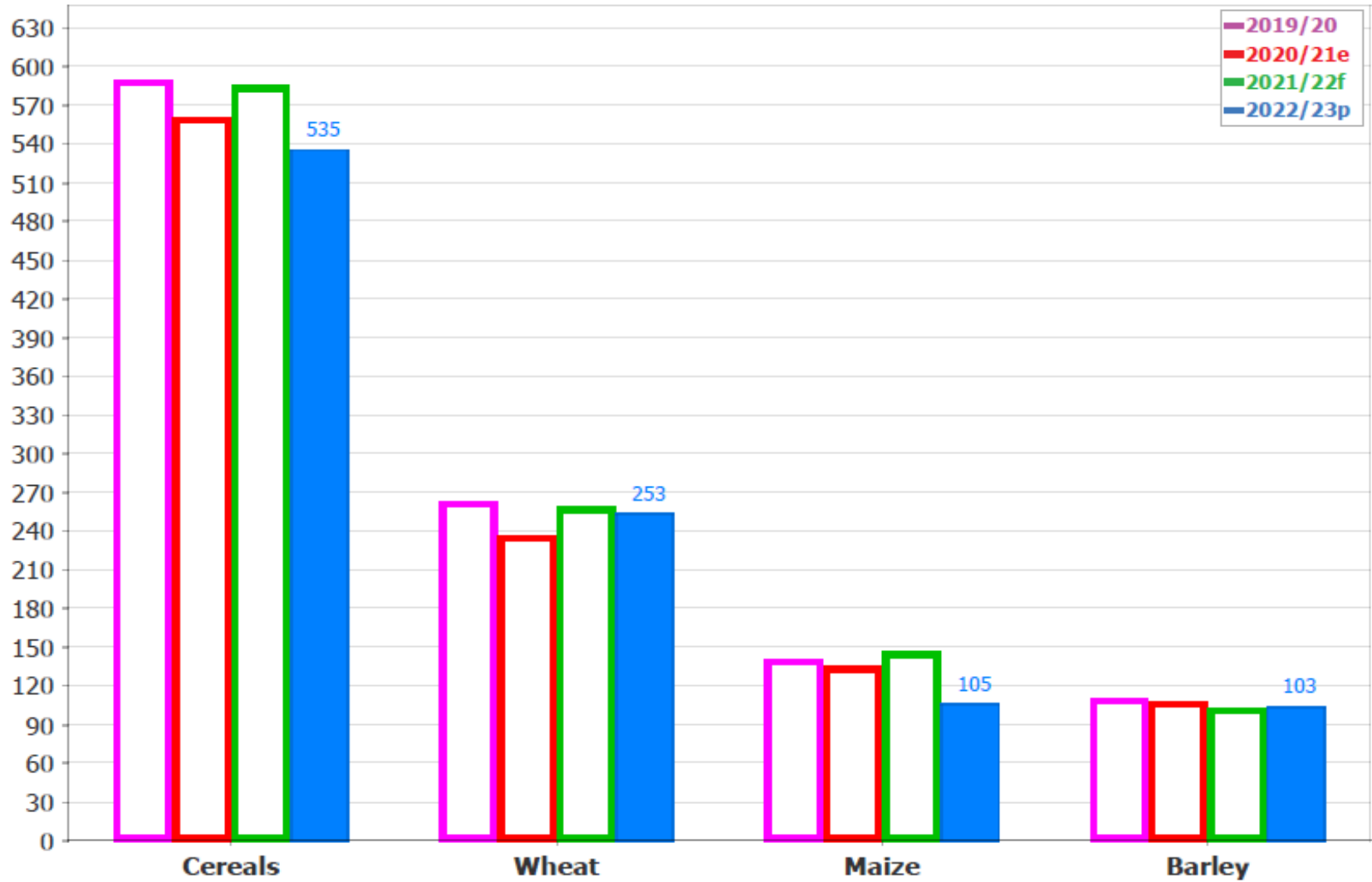
Source: International Grains Council, France Agrimer

## World production (million tonnes)



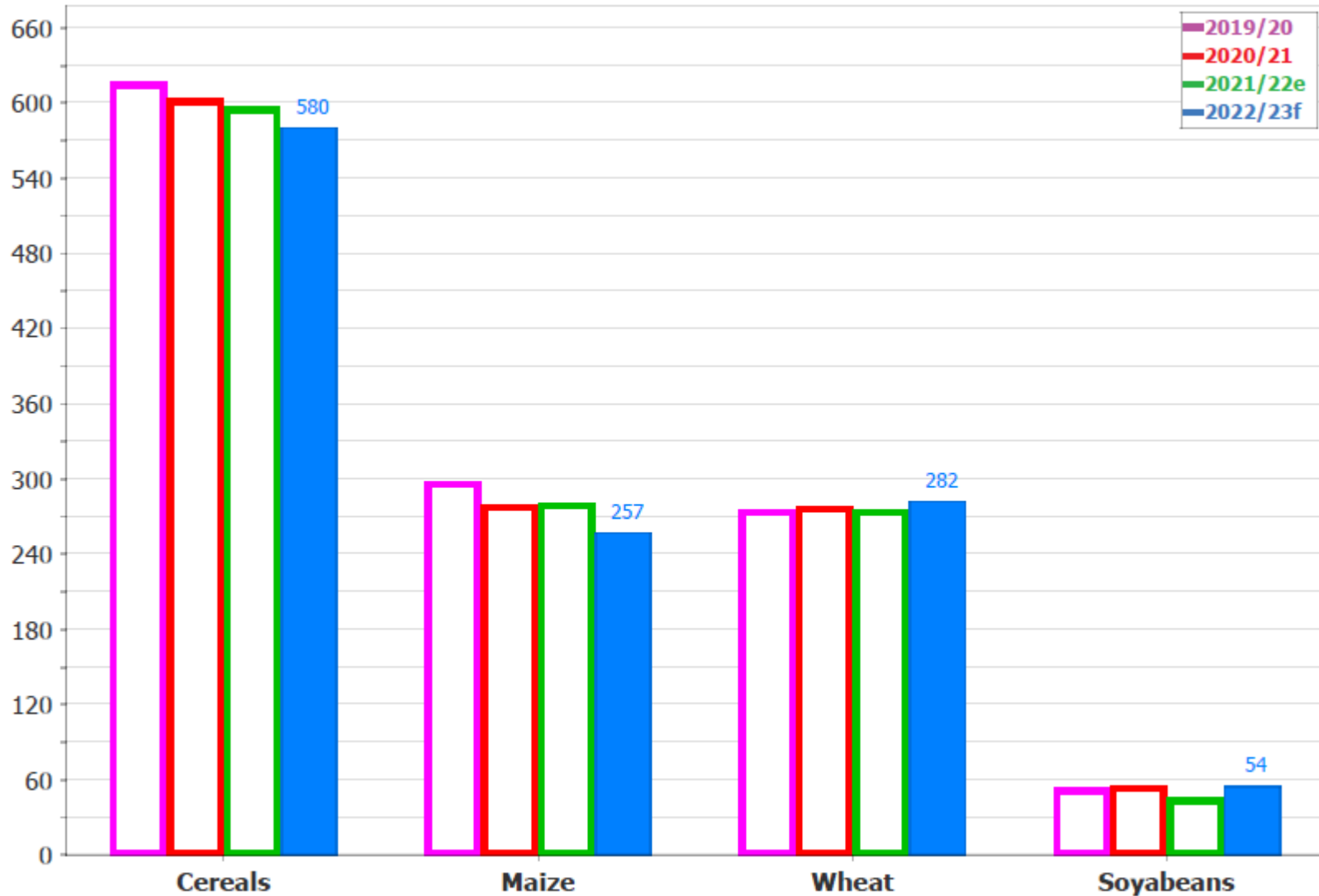
Source: International Grains Council (IGC)

## EU production (million tonnes)



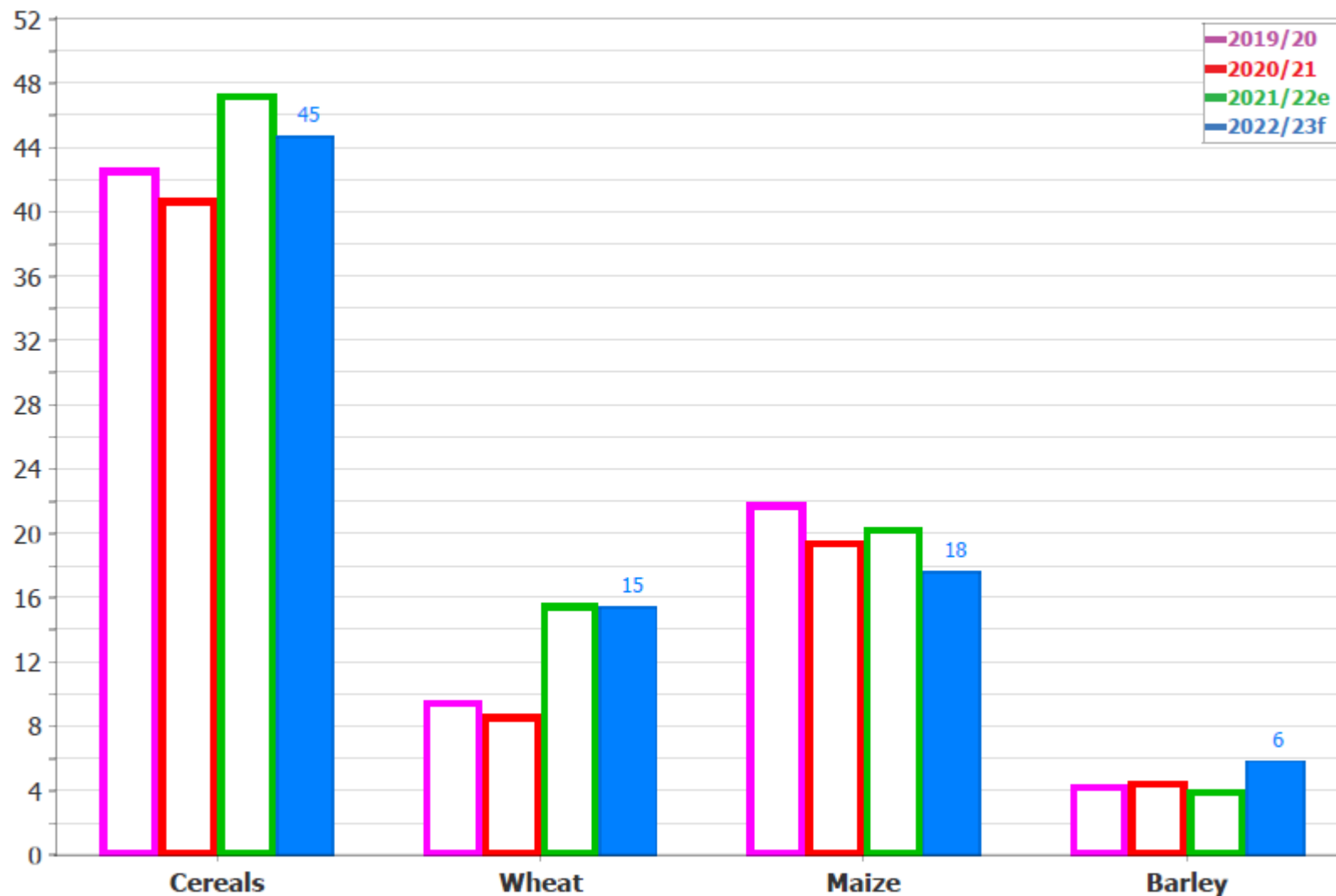
Source: European Commission – DG AGRI

## World stocks (million tonnes)



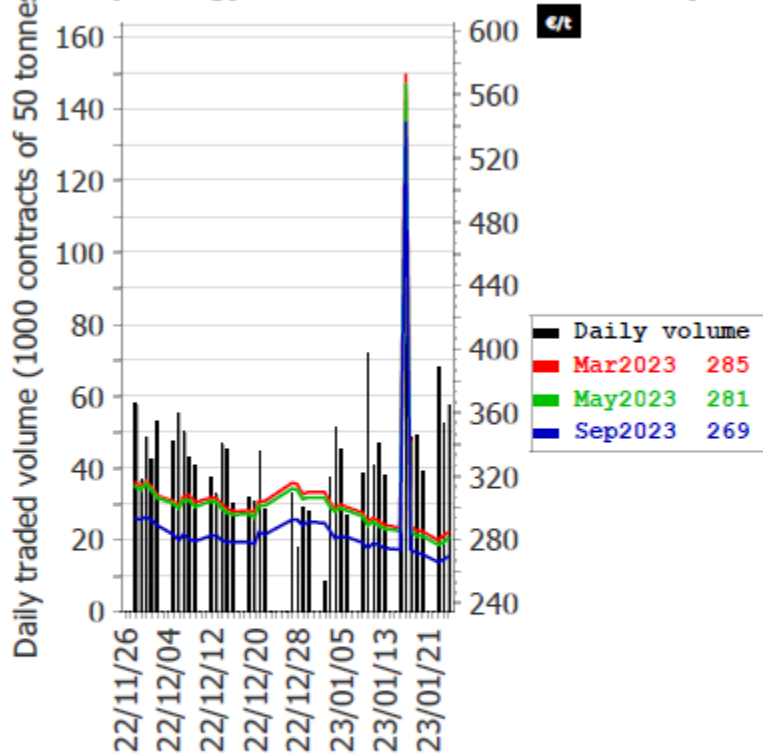
Source: International Grains Council (IGC)

## EU stocks (million tonnes)



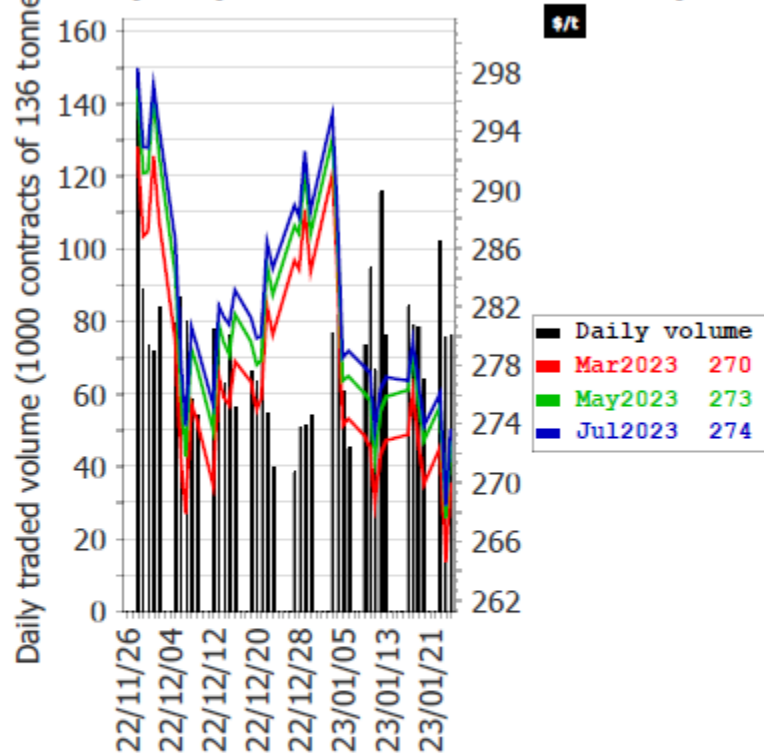
Source: European Commission – DG AGRI

### EU (milling) wheat futures terms - 60 days



Source: Euronext

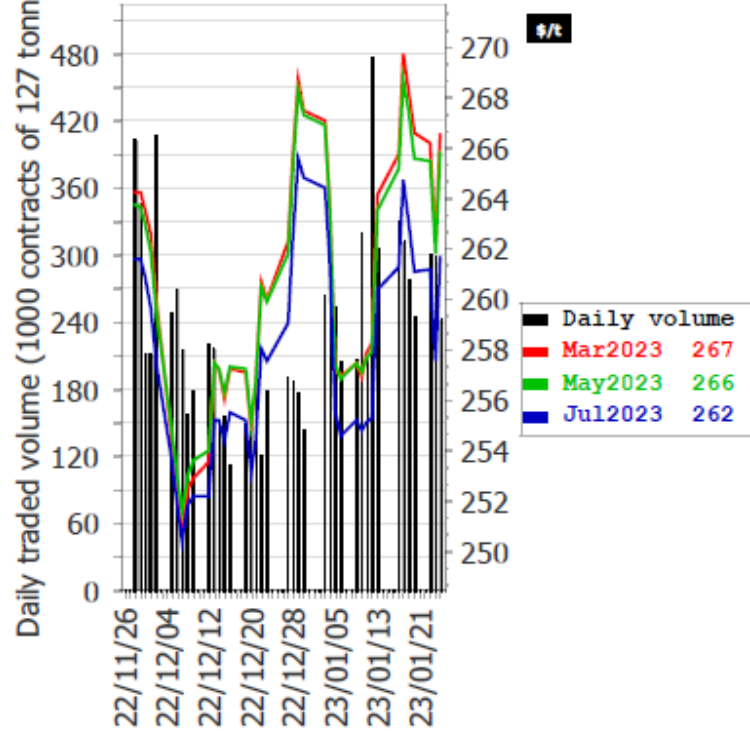
### US (SRW) wheat futures terms - 60 days



Source: CME



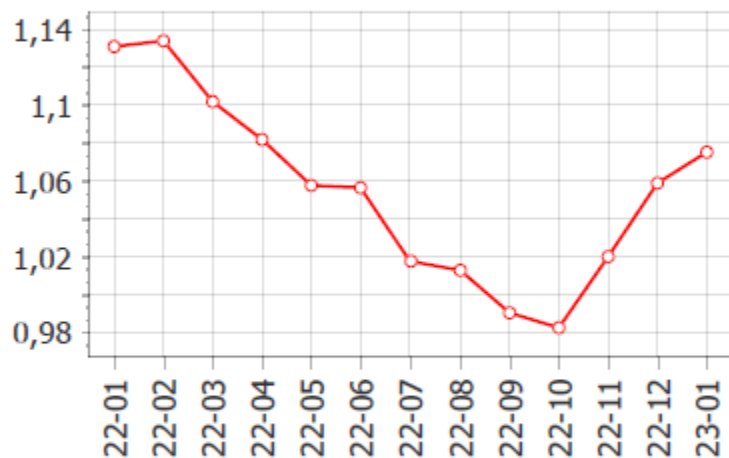
### CME US Maize futures terms - 60 days



Source: CME

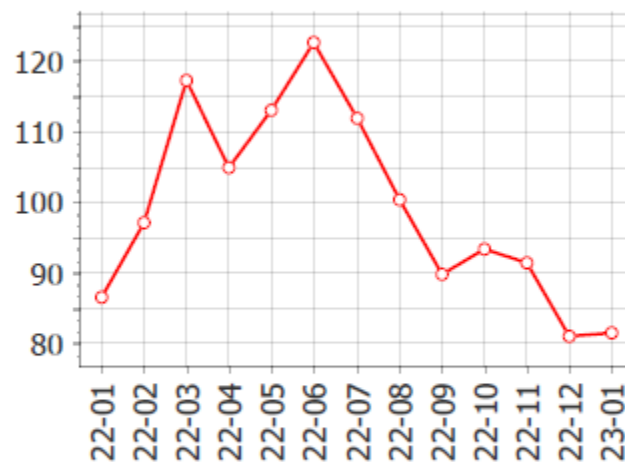
## Monthly avg: currency - oil - freight

### Exchange rate € vs \$



Source: European Central Bank

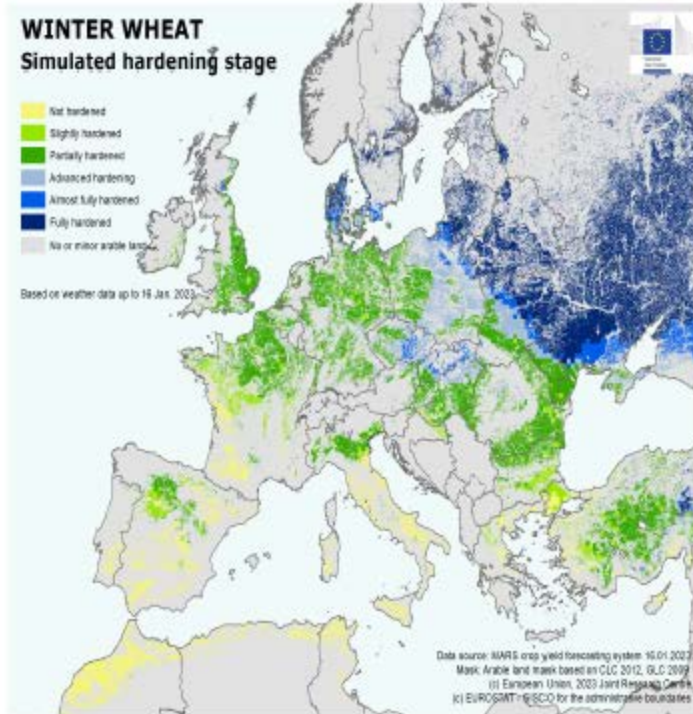
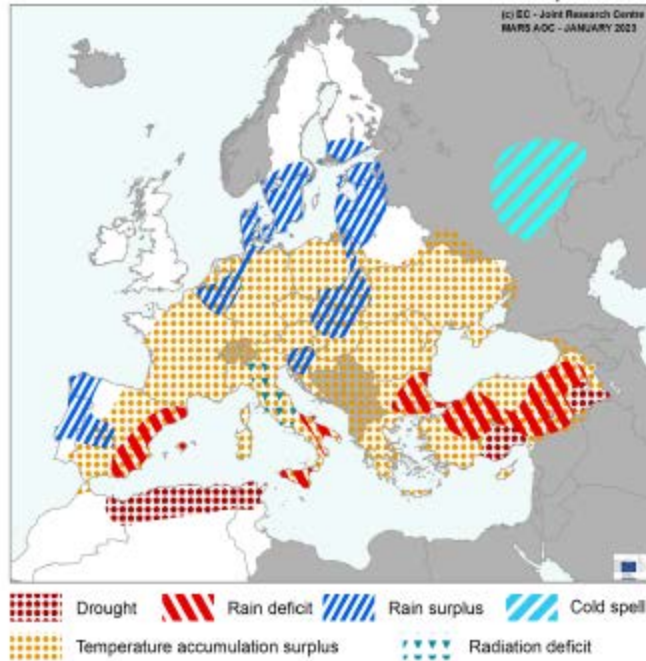
### Brent Crude Oil



Source: U.S. Energy Information Administration (EIA)

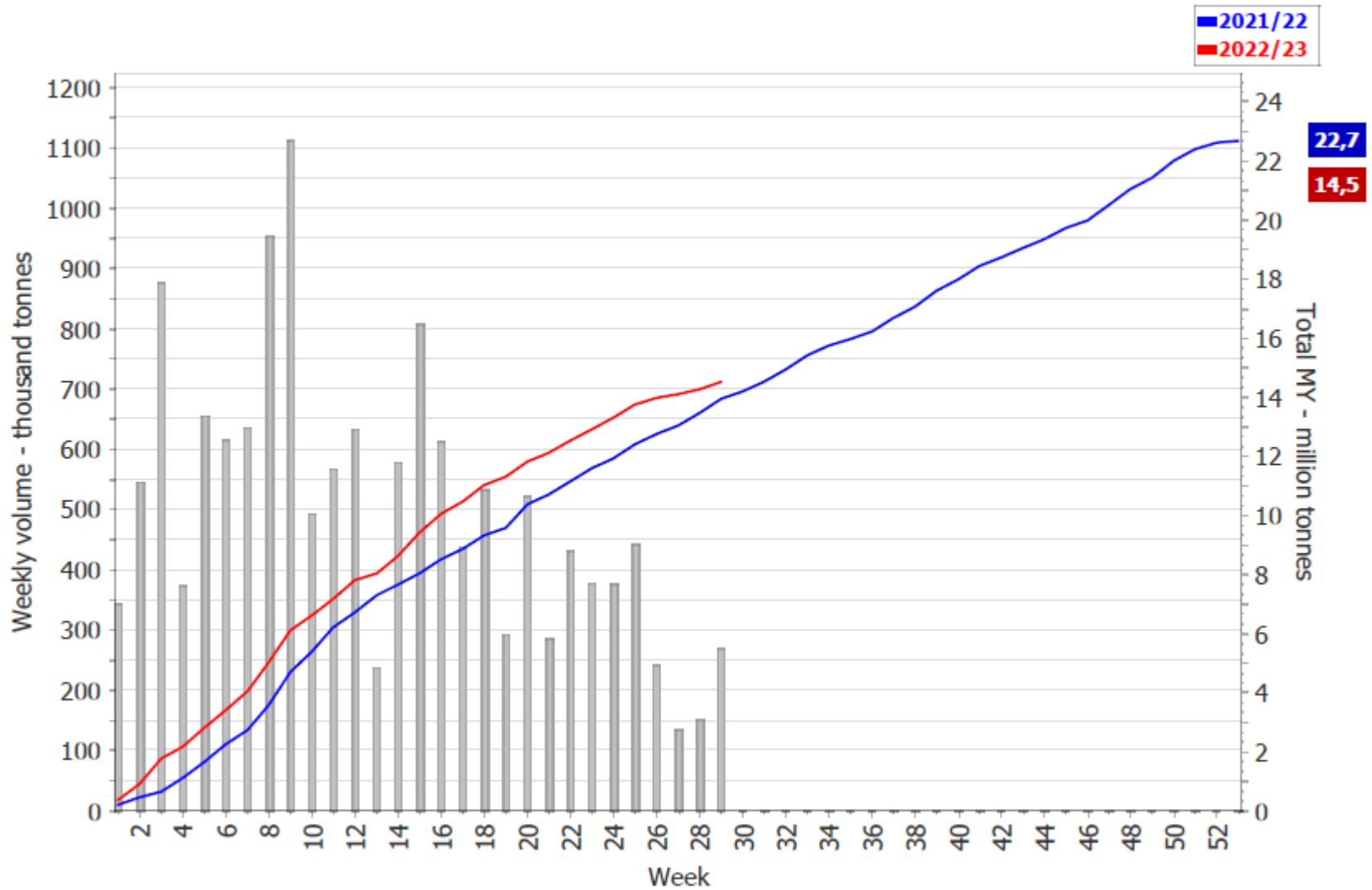
### AREAS OF CONCERN - EXTREME WEATHER EVENTS

Based on weather data from 1 December 2022 until 20 January 2023



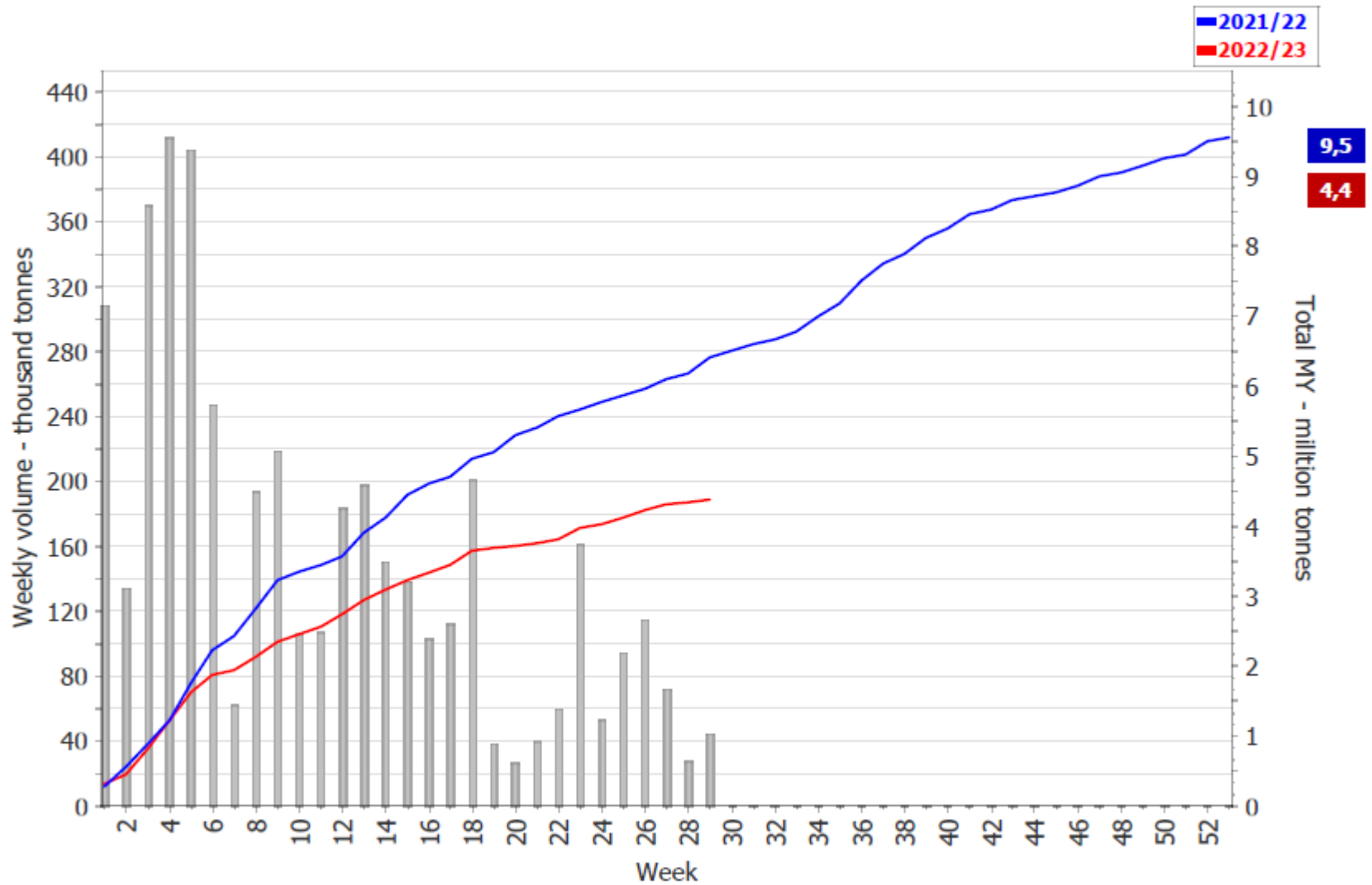
Source: European Commission - DG JRC

# Common wheat & flour - exports



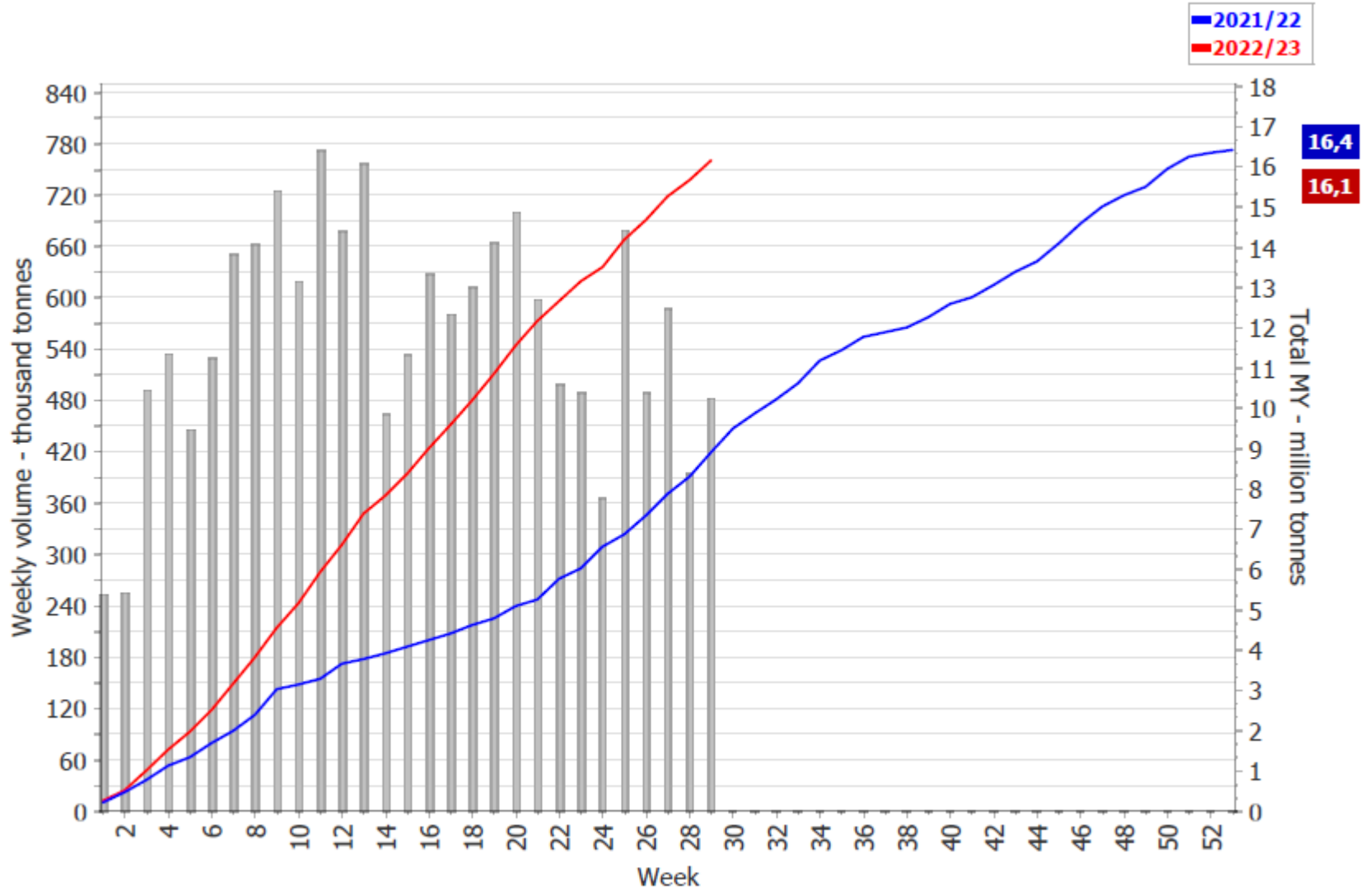
Source: European Commission - DG TAXUD

## Barley, malt included - exports



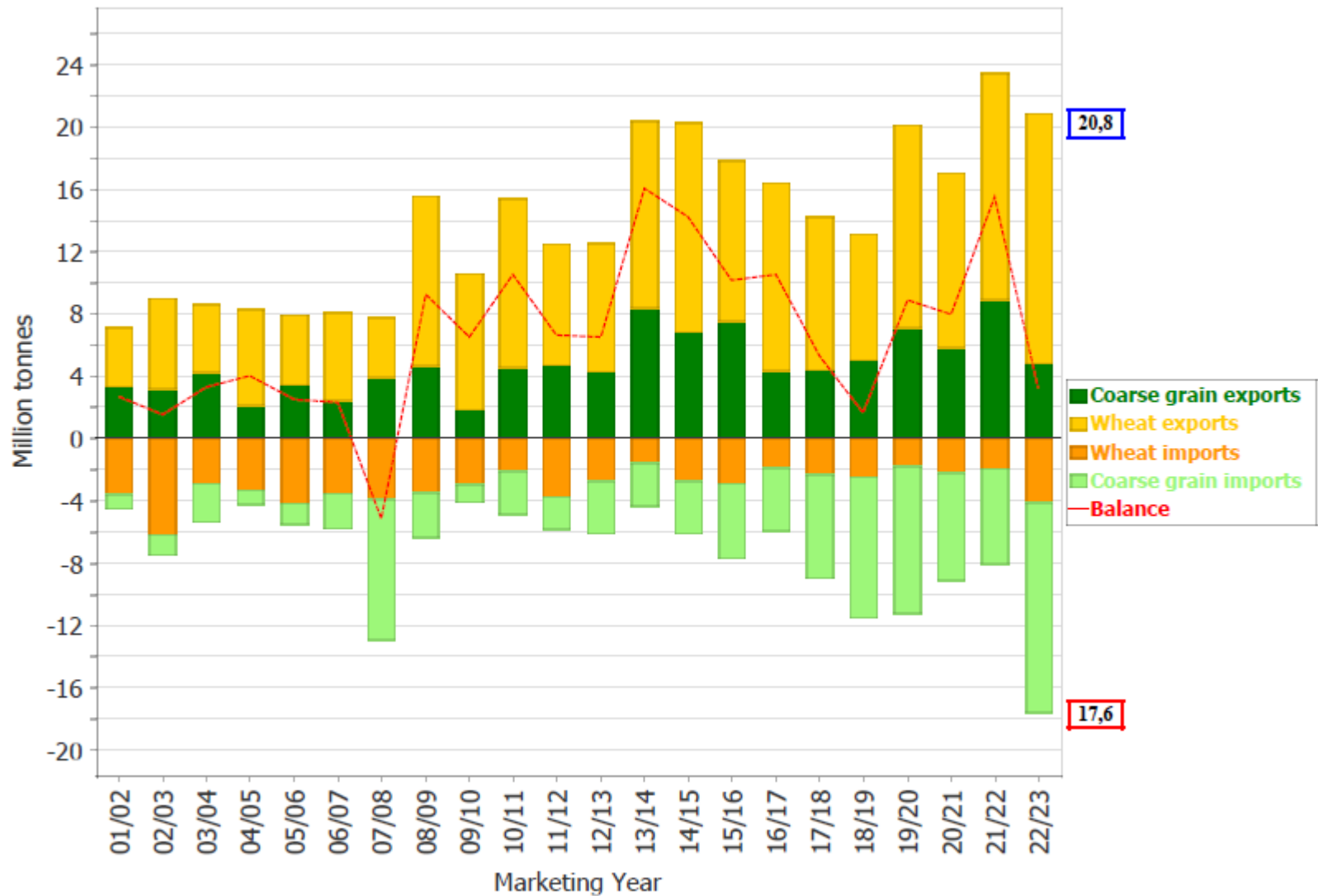
Source: European Commission - DG TAXUD

# Maize - imports



Source: European Commission - DG TAXUD

## Cereals: trade evolution (EU countries) - July to November



Source: Eurostat

# SECTOR CEREALS

---

## FONTS I ENLLAÇOS DE INTRÉS



Generalitat de Catalunya  
Departament d'Acció Climàtica,  
Alimentació i Agenda Rural

<http://agricultura.gencat.cat/ca/departament/estadistiques/agricultura/sectors-agraris/cereals/>



<http://www.mercolleida.com/es>



[http://datacomex.comercio.es/principal\\_comex\\_es.aspx](http://datacomex.comercio.es/principal_comex_es.aspx)



<http://www.llotjadecereals.com/>



Quadre de comandament de la Unió Europea:  
[https://agridata.ec.europa.eu/Reports/Cereals\\_Dashboard.pdf](https://agridata.ec.europa.eu/Reports/Cereals_Dashboard.pdf)



Base de datos de consumo en hogares (MAPA)  
<https://www.mapa.gob.es/app/consumo-en-hogares/consulta11.asp>



Generalitat de Catalunya  
Departament d'Acció Climàtica,  
Alimentació i Agenda Rural





Generalitat de Catalunya  
**Departament d'Acció Climàtica,  
Alimentació i Agenda Rural**

**[agricultura.gencat.cat](http://agricultura.gencat.cat)**